



**SEEDS OF
HEALTH, INC.**



Seeds of Health, Inc. Schools Re-entry Plan - Fall 2020

August 2020

grow
with
Seeds





SEEDS OF
HEALTH, INC.

Areas of Focus

- 1a Guiding Principles 1b General Information
- 2 Building Safety Practices
- 3a Mitigation Measures 3b Protective Measures
- 4 Student & Staff Expectations
- 5 Mental Health and Wellness
- 6 COVID-19 School Health Manager
- 7 Teaching and Learning
- 8 Communication
- 9 Future Guidance
- 10 Floor Plans



SEEDS OF
HEALTH, INC.

Guiding Principles

1a

Guiding principles and core values that will drive the SOH school reopening process are consistent with what has driven the SOH educational mission to Milwaukee families for the better part of four decades. SOH schools (Tenor High School, Veritas High School, Grandview High School, and Seeds of Health Elementary School) will continue to adhere to the belief that educationally challenged urban students respond to high performance expectations and standards when supported with a caring and personalized environment, focused curriculum, effective instruction, quality learning time, and positive role models. Acting on this belief has consistently produced notable measures of program success, including, low student mobility and discipline rates, and high rates of attendance, academic growth, graduation, postsecondary education matriculation, and stakeholder satisfaction. Accordingly, the SOH educational mission will remain focused on comprehensive student preparation (i.e., academic, social, and emotional) for successful pursuit of college, career, civic and cultural opportunities—during and beyond the COVID-19 disruption.



**SEEDS OF
HEALTH, INC.**

General Information

1b

Organization – Seeds of Health, Inc.

District or Organization Name: **Seeds of Health, Inc.**

School Name(s): **Grandview High School
Tenor High School
Veritas High School
Seeds of Health Elementary**

Address: **1445 S. 32nd Street, Milwaukee, WI 53202**

Operator Name: **Seeds of Health, Inc.**
Phone Number: **414-672-3430**
Email: **mspector@seedsofhealth.org**

District or Organization COVID-19 Coordinator Name: **Caryn Glasgow**
Phone Number: **414-385-5667**
Email: **cglasgow@seedsofhealth.org**

School COVID-19 Coordinator: **See pages 5-9 for each school's coordinator**



**SEEDS OF
HEALTH, INC.**



General Information

1b

Seeds of Health Elementary

Seeds of Health Elementary

Health Manager: Ashley Guttuso, 414-385-5669, aguttuso@mysohi.org

Total number of staff: **41**

Total enrollment: **425**

Grade levels of students: **K4-8**

Max building occupancy: **1,607 occupants**

Regular hours of school operation: **8:00 a.m. - 3:05 p.m.**

Extended hours of operation: **7:15 a.m. - 4:45 p.m.** (Staff)
3:05 p.m. - 4:30 p.m. (Students at school clubs)
7:30 a.m. - 8:00 a.m. (Students before school supervision)
7:40 a.m. - 3:40 p.m. (Teachers report)

Building square footage: **45,000 SF**

Number of classrooms: **21 rooms + 2 special education rooms**

Average size of classroom: **25 students**

Multi-use spaces(normal average occupancy): **Gym (50), MakerSpace(26), Cafeteria(230), 1st floor solarium(25), 2nd floor solarium(25), 3rd floor solarium(25), Reading Specialist Suite in WIC area (10)**



**SEEDS OF
HEALTH, INC.**



General Information

1b

Grandview High School

Grandview High School

Health Manager: **Justin Brogni, 414-379-6304**

Total number of staff: **17**

Total enrollment: **158**

Grade levels of students: **9-12**

Max building occupancy: **250 occupants**

Regular hours of school operation: **8:00 a.m. – 3:30 p.m.**

Extended hours of operation: **6:30 a.m. – 5:00 p.m.**

Building square footage: **30,000 SF**

Number of classrooms: **9**

Average size of classroom: **26**

Multi-use spaces(normal average occupancy):**Cafeteria (120), Library (24), Multi-purpose room (26),
Computer Lab (40)**



SEEDS OF
HEALTH, INC.



General Information

1b

Tenor High School – Jackson Street Campus

Tenor High School – Jackson Street Campus

Health Manager: **Tyson Tlachac**, 414-431-4371, ttlachac@seedsofhealth.org

Total number of staff: **19**

Total enrollment: **258 (214 in building, 34 at MATC)**

Grade levels of students: **9-12**

Max building occupancy: **857 occupants**

Regular hours of school operation: **8:15 a.m. – 3:16 p.m.**

Extended hours of operation: **7:00 a.m. – 4:30 p.m.**

Building square footage: **24,000 SF**

Number of classrooms: **9**

Average size of classroom: **30**

Multi-use spaces(normal average occupancy): **Gym (120)**



SEEDS OF
HEALTH, INC.



General Information

1b

Tenor High School – 1st Street Campus

Tenor High School – 1st Street Campus

Health Manager: **Liliana Mendoza**, 414-308-1230, lmendoza@mysohi.org

Total number of staff: **13**

Total enrollment: **119 (101 in building, 18 at MATC)**

Grade levels of students: **9-12**

Max building occupancy: **394 occupants**

Regular hours of school operation: **8:15 a.m. – 3:16 p.m.**

Extended hours of operation: **7:00 a.m. – 4:30 p.m.**

Building square footage: **11,000 SF**

Number of classrooms: **6 + 1 Special Education recourse room**

Average size of classroom: **30**

Multi-use spaces(normal average occupancy): **Cafeteria (50)**



**SEEDS OF
HEALTH, INC.**



General Information

Veritas High School

1b

Veritas High School

Health Manager: **George Thimmesch, 414-389-5570, gthimmesch@seedsofhealth.org**

Total number of staff: **21**

Total enrollment: **254**

Grade levels of students: **9-12**

Max building occupancy: **785 occupants**

Regular hours of school operation: **8:15 a.m. – 3:25 p.m. Monday to Friday**

Extended hours of operation: **7:45 a.m. - 3:45 p.m. Monday to Friday**

Building square footage: **22,000 SF**

Number of classrooms: **14 rooms**

Average size of classroom: **25 students**

Multi-use spaces(normal average occupancy): **Cafeteria (120), Library (5)**



SEEDS OF HEALTH, INC.

Building safety practices

2

Signage

- Signage/floor markers have been placed in highly visible locations such as school entrances and restrooms to promote protective measures and to advise staff, students, and visitors to stay six feet apart.

SEEDS OF HEALTH, INC. COVID-19 INFORMATION

HELP STOP THE SPREAD
All of these precautions help stop the spread of COVID-19. You should practice them even if you don't believe you are sick:

1. Regularly wash your hands thoroughly for 20 sec or use hand sanitizer. Wash hands before and after eating.
2. Avoid touching your eyes, nose and mouth
3. Maintain social distance between yourself and others (6ft minimum)
4. Cover your coughs and sneezes. If you use a tissue, throw it away immediately. Wash your hands if you sneeze or cough into them.
5. Wear a face-covering mask when in public
6. Stay home if you believe you are sick
7. Avoid contact with those who are sick

SYMPTOMS OF COVID-19
People with COVID-19 have had a wide range of symptoms reported – ranging from mild symptoms to severe illness. Symptoms may appear 2-14 days after exposure to the virus. People with these symptoms may have COVID-19:
Fever or chills
Cough
Shortness of breath or difficulty breathing
Fatigue
Muscle or body aches
Headache
New loss of taste or smell
Sore throat
Congestion or runny nose
Nausea or vomiting
Diarrhea

HOW IT SPREADS
The virus that causes COVID-19 is thought to spread mainly from person to person, mainly through respiratory droplets produced when an infected person coughs or sneezes. These droplets can land in the mouths or noses of people who are nearby or possibly be inhaled into the lungs. Spread is more likely when people are in close contact with one another (within about 6 feet).

IF YOU THINK YOU ARE SICK
If you are at school, please tell a teacher or principal that you feel sick. If you are at home, please tell your parent that you feel sick.

Seeds of Health's facilities follow all recommended CDC procedures for COVID-19 mitigation in schools as of June 30, 2020. This institution is an equal opportunity provider.

SEEDS OF HEALTH ELEMENTARY SCHOOL

RULES FOR ENTERING THIS SCHOOL - PLEASE READ
REGLAS PARA ENTRAR A ESTA ESCUELA - POR FAVOR LEE

Please help us keep our students, families, and staff safe & healthy.
Ayúdenos a mantener la seguridad y la salud de nuestros estudiantes, familias y personal.

Getting access: All visitors must receive permission to enter the building from school administration. Call 414-672-0726
Por favor espere en recepción hasta que alguien venga a escoltarlo.

Washing hands: Wash your hands upon entering with hand sanitizer located at entrance. Use hand sanitizer after coughing, sneezing, or using the restroom.
Lavándose las manos: Lávese las manos al entrar con un desinfectante para manos ubicado en la entrada. Use desinfectante para manos después de toser, estornudar o usar el baño.

Wearing masks: Cloth face covers (i.e. masks) must be worn at all times inside the school.
Usando máscaras: Se deben usar cubiertas faciales de tela (es decir, máscaras) en todo momento dentro de la escuela.

Keeping distance: Maintain social distancing of at least 6 feet as often as possible – when sitting, standing and walking.
Manteniendo distancia: Mantenga un distanciamiento social de al menos 6 pies con la mayor frecuencia posible - al sentarse, pararse y caminar.

Staying home: Monitor your health for signs and symptoms of Covid-19 and do not enter the building if you are sick.
Quedándose en casa: Esté atento a los signos y síntomas de salud de Covid-19 y no ingrese al edificio si está enfermo.

These rules have been adapted from the CDC's guidelines for Childcare facilities. Estos reglas se han adaptado de los pautas de los CDC para instalaciones de cuidado infantil. <https://www.cdc.gov/community/2019-nCoV/community/schools-childcare-guidance-for-childcare.html>

Seeds of Health's facilities follow all recommended CDC procedures for COVID-19 mitigation in schools as of June 30, 2020. This institution is an equal opportunity provider. Esta institución provee igualdad de oportunidades.

SEEDS OF HEALTH VERITAS HIGH SCHOOL

STUDENT RULES

1. WASH YOUR HANDS OR USE HAND SANITIZER WHEN ENTERING THE SCHOOL
2. MAINTAIN 6FT SOCIAL DISTANCING - THIS INCLUDES WALKING DOWN THE RIGHT SIDE OF HALLWAYS
3. WEAR YOUR MASK
4. USE YOUR LOCKER ONLY ONCE PER DAY
5. DO NOT TOUCH HAND RAILS UNLESS NECESSARY - PLEASE USE STAIRS CAREFULLY
6. IF YOU ARE FEELING ILL, PLEASE LET A TEACHER KNOW IMMEDIATELY
7. NO GUM CHEWING
8. DO NOT SHARE SCHOOL SUPPLIES

Seeds of Health's facilities follow all recommended CDC procedures for COVID-19 mitigation in schools as of June 30, 2020. This institution is an equal opportunity provider.



SEEDS OF
HEALTH, INC.

Building safety practices

2

[continued]

Training

- Staff and students will be trained on building safety practices described herein, and staff will monitor and enforce such practices.

Hand Washing and Hand Sanitizing

- Adequate supplies including soap, hand sanitizer, paper towels, tissues, disinfectant wipes, and face coverings have been made available throughout each building.
- Sneeze guards between sinks in bathrooms and office areas, and no touch foot pedal trash cans have been placed throughout each building.

Drinking Fountains

- All bubblers have been turned off. All students will bring their own water bottles.

Water and Ventilation Systems

- All water systems and features including sinks & faucets will be tested to ensure they are safe to use
- Currently, we are looking to expand UV light filters to 100% of the AHU's.
- All HVAC units currently have been (or will be), fitted with MERV 13 or higher filters which are rated to filter out Coronavirus particulate. In addition, all building filters are changed twice a year, once at the beginning of summer and once over winter break.
- All HVAC units are in accordance with ASHRAE standards and provide the appropriate amount of CFM's of both fresh and recirculated air for those designed classrooms.



SEEDS OF
HEALTH, INC.

Building safety practices

2

[continued]

Touchless waste disposal

Facial tissue, paper towels, and Lysol wipes will be disposed of by students and staff in touchless trash cans

Social distancing in buildings

Students will be taught to stay to the right of hallways and to not touch other students, lockers, walls or other belongings. To the greatest degree possible, 6ft spacing will be used when students are walking through the hallways, lining up at the elementary level and waiting for others.

Times before and after school when students are allowed in building will be limited. Students will move directly to classrooms and will not be allowed to mingle in hallways, cafeteria, gyms etc.

Students will not be allowed into the building until starting time unless they go directly to their classroom wearing their mask and maintaining 6ft distance. Staff will monitor arrival and dismissal to control congregating and ensure students go straight from their mode of transportation to their classrooms and vice versa.

Lockers

Lockers and cubbies will be 6ft apart and students will be encouraged to limit locker use before school, during lunch, and after school.



SEEDS OF
HEALTH, INC.

Building safety practices

[continued]

2

Seeds of Health contracts professional cleaning with B&L Cleaning.

The following cleaning procedures are in place:

High Schools

All tables, desks, chairs, and shared stationary computers will be cleaned and disinfected by designated staff after each class period or after students move from one class to another using CDC approved products.

Elementary

All tables, desks, chairs, and frequently touched surfaces will be cleaned and disinfected by designated staff in all classrooms multiple times a day.

All Buildings

All classrooms, common areas, and offices will be cleaned and disinfected each evening and will be treated with the products referenced here: [Seeds of Health B L Cleaning EPA N List Approved Chemicals.](#) We have also attached our daily cleaning schedules: [Seeds of Health 2020-21 Cleaning Schedules](#)



SEEDS OF
HEALTH, INC.

Building safety practices

[continued]

2

Restrooms

Sneeze guards have been installed between sinks in bathrooms. Restrooms will be cleaned and disinfected periodically throughout the day, as well as nightly.

Lunchroom/Cafeteria

Breakfast and lunch will be individually plated meals served in classrooms unless the school's cafeteria meets the CDC social distancing requirements. Sharing of food is not allowed. As always we are ensuring the safety of children with food allergies.

Health Room

An N95 mask, gown, gloves, and face shield will be provided to designated staff working in the health room. When the patient leaves the health room, the room will be quarantined and cleaned and disinfected as soon as possible using designated cleaning processes.



SEEDS OF
HEALTH, INC.

Building safety practices

2

[continued]

Physical Education Equipment Room/Playground

Physical activity will take place while 6ft social distancing is maintained. Whenever possible, physical education and special classes will be held outside, weather permitting, and participants will 6 feet social distance. All materials and equipment will be cleaned and sanitized after each use. No equipment will be shared.

Hot Spots

Cleaning service will disinfect hot spots from 11:00am to 1:30pm daily.

Lockers

Lockers and touch points will be cleaned periodically utilizing a BISSELL 39N7A/39N71 Steam Shot Deluxe Hard-Surface Cleaner.





SEEDS OF
HEALTH, INC.

Mitigation measures

[continued]

3a

Masks & face covering

All Seeds of Health staff and students will be required to wear face coverings upon entering the building and when inside the building where social distancing cannot be maintained. The covering should cover the nose and mouth completely. A face covering is not meant to substitute for social distancing, but is especially important in situations when maintaining a 6-foot distance is not possible. Transparent face masks will be used with students who are deaf or hard of hearing for lip-reading purposes as well as staff providing direct support student services, when a face covering impedes the service provided.

Types of face coverings allowed:

- Paper or disposable mask
- Cloth face mask
- Scarf
- Bandana
- Transparent face mask

Seeds of Health will provide face coverings and/or face shields to all staff and students. Staff and students may choose to wear their own face covering as long as it meets the minimum requirement of covering the nose and mouth. Seeds of Health will maintain a supply of disposable masks for staff and students who may forget their provided face covering.



SEEDS OF
HEALTH, INC.

Mitigation measures

[continued]

3a

Masks & face covering [continued]

The Milwaukee Health department has locations which families and visitors can pick up free masks

Zeidler Municipal Building - 841 N. Broadway

Keenan Health Clinic - 3200 N. 32nd St.

Northwest Health Center - 7630 W. Mill Rd.

Southside Health Center - 1639 S. 23rd St.

Times when it is appropriate for students or staff to remove face coverings

- High exertion time i.e. running a mile
- Eating or drinking, but care should be taken to maintain as much space as possible between people, recognizing it is not always feasible to maintain 6 feet of distance from others.
- Staff working alone in their offices, classrooms, vehicles, or other job locations who do not have any person-to-person interaction.
- When communicating with a person who is deaf or hard of hearing or has a disability, medical condition, or mental health condition that makes communication with a face covering difficult, provided that social distancing is maintained to the extent possible. Masks with clear fronts are recommended if a face mask is not appropriate.



SEEDS OF
HEALTH, INC.

Mitigation measures

[continued]

3a

Masks & face covering [continued]

The CDC recommends the following for wearing masks correctly:

- Wash your hands before putting on your mask
- Put it over your nose and mouth and secure it under your chin
- Try to fit it snugly against the sides of your face
- Make sure you can breathe easily
- CDC does not recommend use of masks or cloth masks for source control if they have an exhalation valve or vent
- Wear a mask that covers your nose and mouth to help protect others in case you're infected with COVID-19 but don't have symptoms
- Wear a mask in public settings when around people who don't live in your household, especially when it may be difficult for you to stay six feet apart
- **Don't** put the mask around your neck or up on your forehead
- **Don't** touch the mask, and, if you do, wash your hands or use hand sanitizer to disinfect



SEEDS OF
HEALTH, INC.

Mitigation measures

[continued]

3a

Staff screening tool

Seeds of Health will use the Health Screening Tool through our Skyward student management system to administer and track screening questions on a daily basis. In the morning before arriving to school staff and students/parents will be expected to login into Skyward and answer the following two screening questions:

1. In the last 24 hours, have you experienced any of the following symptoms in a way not normal to you?
 - Fever or chills
 - Cough
 - Shortness of breath or difficulty breathing
 - Fatigue
 - Muscle or body aches
 - Headache
 - New loss of taste or smell
 - Sore throat
 - Congestion or runny nose
 - Nausea or vomiting
 - Diarrhea
2. In the last 24 days, have you been in close contact with a suspected or confirmed case of COVID-19 or tested positive yourself?

If a student/parent did not complete the required screening questions before arriving to school, a school staff member will be present and ask the questions and log the information into Skyward management tool.

If a student answers both questions "no" they will receive a response that says, "Based on your responses, you are feeling well enough for school today." If a student answers yes to one or both questions they will receive a response that says "You are experiencing symptoms of an illness or have been in close contact with someone with a suspected illness. Stay home today. You will receive a follow up via phone."

Staff will be able to run a report each morning to determine if staff and students have completed the screening questions and which staff and students passed and failed the screening questions. Skyward will keep all data to allow information to be tracked.



SEEDS OF
HEALTH, INC.

Mitigation measures

[continued]

3a

Visitors

- The total number of people in any building will be 50% of maximum capacity
- All visitors will be required to wear masks in the building and will wait in the front lobby to be greeted by the person they are visiting.
- All visitors will be asked health screening questions before entering buildings as outlined [here](#).
- Non-essential visitors, volunteers, and activities involving external groups or organizations will be limited as much as possible.

Events, Group Activities, and Extracurricular Activities

- Virtual activities and events will be substituted in place of field trips, student assemblies, special performances and other events as much as possible.
- Any extracurricular activities will comply with building safety practices (social distancing and mask wearing requirements), will be conducted outdoors or in large alternative spaces when possible, or will be conducted in smaller groups to ensure social distancing can be implemented.
- Organized sports will follow the determined WIAA policy and procedures.



SEEDS OF
HEALTH, INC.

Mitigation measures

3a

[continued]

Social Distancing

- All desks and chairs are to be placed 6 feet apart to maintain social distancing in classrooms (See provided classroom floor plan renderings in section 10)
- All common areas, including cafeterias and playgrounds, will be closed as needed
- Students will be dropped off in front of the buildings at the beginning of the school day. No parents or guardians will be allowed to escort their child into the building. Students will meet their rides outside of the building at the end of the school day. No parents or guardians will be allowed to escort their child out of the building. Staggered arrival and dismissal times will be utilized.
- Staff will monitor arrival and dismissal to curtail congregating, and ensure students go straight from vehicles to classroom and vice versa.
- All bathroom sinks have physical plexiglass barriers installed where they are not 6 feet apart.
- School office spaces have physical plexiglass barriers installed.



SEEDS OF
HEALTH, INC.

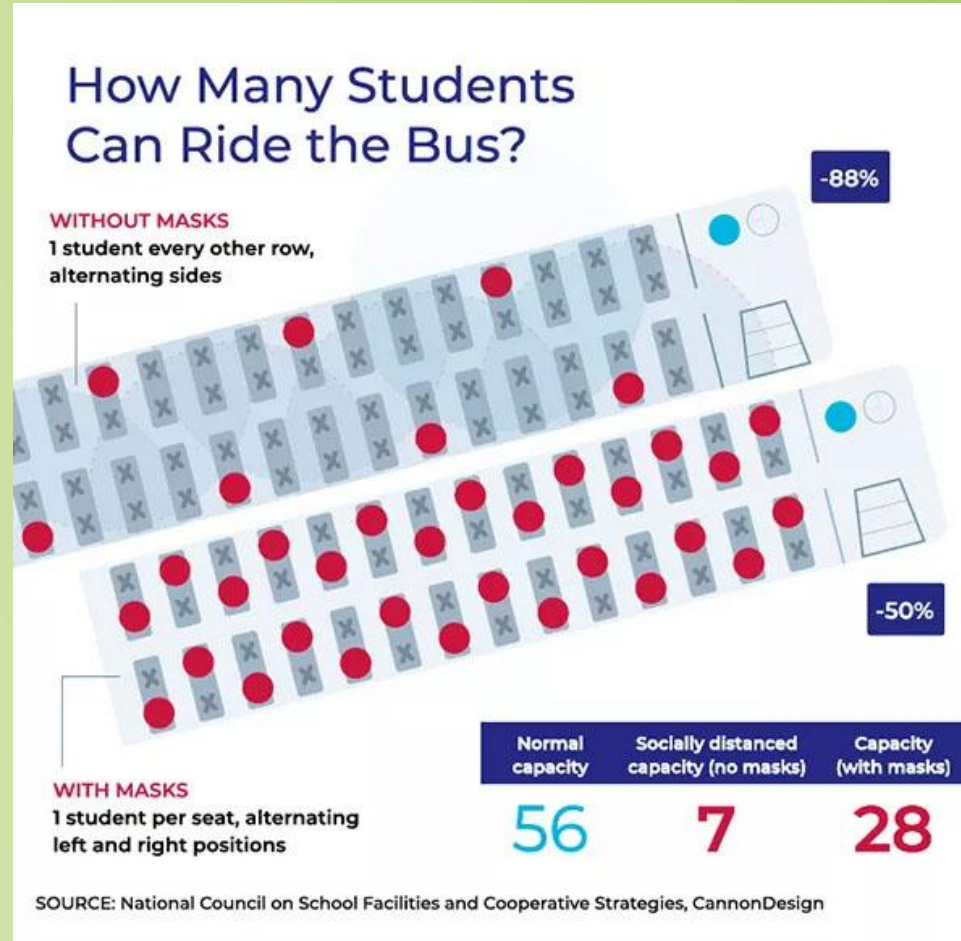
Mitigation measures

3a

[continued]

School Buses

- The total number of students on the bus will be 50% of maximum capacity. School Buses transporting students to and from school and other activities will follow the department of transportation requirements. All students will wear masks and all drivers will wear masks as they are loading and unloading students. Plexiglass will be placed between the driver and students. The buses will utilize ZOONO-Z71 on a monthly basis. Students will sit one to a seat. In addition, Seeds of Health assigned staff will clean the buses with our own machines three times a week.





SEEDS OF HEALTH, INC.

Mitigation measures

[continued]

3a

According to the Wisconsin Department of Health Services, when a student tests positive for COVID-19 or comes into “close contact” with someone that tests positive for COVID-19 he or she will need to transition into virtual instruction. Close contact is defined as being within six feet of someone that tested positive for COVID-19 for at least fifteen cumulative minutes over a 24 hour period. In elementary schools, close contact may include the entire classroom of students if the students are not able to maintain physical distance to one another. In the middle and high schools, close contact will be determined based on the findings of the District’s and local health department’s contact tracing efforts. The following chart delineates how long students in such situations will need to participate in virtual instruction before being able to access in-person instruction again. Parents are asked to stay in contact with their healthcare providers, school healthcare personnel, and the local health department. Together they will guide parents and students through the quarantine and isolation process, and will determine the best date for returning to in-person instruction.

IF	THEN	CALENDAR DAYS ASSIGNED TO VIRTUAL FUNCTION
Your child tests positive for COVID-19	Your child will be assigned virtual instruction for days school is in session over the course of at least 10 days. The last day prior to your child’s return to in-person instruction, your child must be symptom-free	At least 10 days from date of test or onset date
Someone in your child’s household Tests positive for COVID-19	Your child will be assigned virtual instruction during the time any members of the household that test positive are isolating plus an additional fourteen calendar days after the infected member/s of the household are released from isolation. This assumes the child continues to be in direct, close contact with the household member while they are infectious. If the COVID-19 positive household member is able to isolate separately from the child, the child would follow the virtual instruction guidelines for “close contacts.” This also assumes your child does not develop symptoms during the quarantine period.	At least 24 days from date of household members onset date
Someone your child has been in “close Contact” with tests positive for COVID-19	Your child will be assigned virtual instruction for days school is in session over the course of 14 days. If your child is symptom-free throughout this time then afterward your child can return to in-person instruction. This assumes your child does not develop symptoms during the quarantine period.	At least 14 days from date of exposure



SEEDS OF
HEALTH, INC.

Mitigation measures

[continued]

3a

Health Screening

We will conduct daily temperature screening for all people entering the building. If individuals have symptoms of COVID-19, they may be required to stay home until they receive medical clearance or a negative COVID-19 test, and can safely return to school. Any medical information received or obtained by the school will be kept confidential. [How to respond to a positive COVID-19 case](#) (Final response outline awaiting guidance from the Milwaukee Health Department)

If a student or staff exhibits COVID-19 symptoms

If an individual exhibits COVID-19 symptoms while at school, a designated space will be provided in each building to separate the ill individual from other students and staff. Symptomatic people will be immediately isolated in the designated space.

- The designated space will have adequate space for social distancing of at least 6 feet for multiple people if needed.
- The designated space will be disinfected between uses and as needed.
- The symptomatic person will remain under visual supervision of a staff member while waiting to be picked up.
- The symptomatic person will immediately be sent home. For students, their parent or guardian will be contacted to pick them up. If a parent or guardian is not available, emergency services will be contacted for transportation.

If an individual within the school community tests positive for COVID-19, the individual's classroom will be closed and sanitized after 24 hours. The school will review the student or staff member's classroom schedule to determine contact tracing procedures.

The following communications will be used to notify families and staff if they come in close proximity to someone who has tested positive for COVID-19 at school.

[Student COVID-19 Notification](#)

[Employee COVID-19 Notification](#)

The school will contact and work with the local health department to determine additional closure, notifications and quarantine for individuals exposed.



SEEDS OF
HEALTH, INC.

Protective measures

3b

[continued]

- A point person will monitor the usage of supplies on a daily basis and let the cleaning service know on a nightly basis if supplies need to be replaced
- Protective measures will be built into the daily schedule
- A point person will teach and reinforce hand washing with soap and water for at least 20 seconds and/or the safe use of hand sanitizer that contains at least 60% alcohol by staff and older students
- A point person and staff will be stationed at bathrooms and outside of classrooms to supervise and ensure that students follow the protocols
- Make available soap and water for children and staff that have sensitivity or skin reasons to hand sanitizer
- Point person and designee will reinforce hand washing during key times including but not limited to: arrival and dismissal, before, during, and after preparing or eating food, after using the bathroom, after blowing one's nose, after coughing or sneezing, and after touching objects with bare hands that have been handled by other people



SEEDS OF
HEALTH, INC.

Protective measures

3b

[continued]

Ensure adequate supplies to minimize sharing of high-touch materials to the extent possible (e.g., by dedicating supplies or equipment to individual students) or limit the use of supplies and equipment to one small classroom cohort group at a time, allowing for time to clean and disinfect between use.

- To the extent possible avoid sharing electronic devices, books, toys, and other games or learning aids when possible, and ensure cleaning between uses.
- Have students keep personal items in individually labeled cubbies, containers, desks, or lockers. Lockers should be assigned at least 6 feet apart from the next individual or based on the alternate/hybrid schedule.
- Handle non-disposable food service items minimally and wash them with hot water and soap or in a dishwasher.
- Discourage the use of items that are difficult to clean or disinfect.



SEEDS OF
HEALTH, INC.

Staff & student expectations

4

Please see linked Student Handbook and Employee Handbook
[Seeds of Health Student Handbook COVID-19 Appendix A](#)
[Seeds of Health Employee Handbook COVID-19 Appendix A](#)
for detailed staff and student COVID-19 expectations.

Illness guidelines & protocols

- Please see page 4 of Student Handbook
- Please see page 6 of Employee Handbook



SEEDS OF
HEALTH, INC.

Mental Health & Wellness

5

Supporting mental health and wellness

The COVID-19 pandemic is causing a tremendous amount of stress, fear, and anxiety for many people. It's important that Seeds of Health staff have access to the mental healthcare resources they need to stay well during this challenging time. Schools can play an important role in helping students and staff cope, assess needed resources, and build resilience.

- Provide staff, families and students with information on how to access resources for mental health and wellness.
- Encourage staff students and families to talk with people they trust about their feelings and concerns regarding the COVID-19 pandemic.
- Counselors and therapists will be available for staff, students and families to ensure a safe and secure return to school in the fall. Social workers will be on site at Grandview High School, a school counselor and a therapist from Saint A will be on site at Seeds of Health Elementary, Tenor High School (Jackson Street campus and 1st Street campus), and Veritas High School.



**SEEDS OF
HEALTH, INC.**

COVID-19 Health Coordinator

6

District or Organization COVID-19 Coordinator Name: **Caryn Glasgow**
Phone Number: **414-385-5667**
Email: **cglasgow@seedsofhealth.org**

COVID-19 Health Coordinator duties

This position will communicate concerns, challenges, issues, and preventive activities related to COVID-19 as needed with staff, students /families/guardians, school and district leadership, and the City of Milwaukee Health Department. The COVID-19 coordinator will maintain a Google doc with information provided to her daily from the schools' administrative assistants. The information will monitor the following:

- Daily absences and what is the nature of the absence
- If there is an illness: Identify the illness, zip code the student resides in and send families and staff a Skylert. The coordinator will follow the Wisconsin Department of Health Services guidelines as outlined in the Mitigation Measures on page 20 of this document
- The Coordinator will check the Google doc daily and report any exposures or confirmed cases to the administration and to Marlaina Jackson, Deputy Commissioner of Community Health at ASKMHDCOVID19@milwaukee.gov who will in turn inform the families to contact the health department.

All staff, students, parents, and guardians will be provided contact information for the COVID-19 Health Coordinator at the beginning of the year. This position will communicate concerns, challenges, issues, and preventive activities related to COVID-19 as needed with staff, students/families, school and district leadership, and the City of Milwaukee Health Department.

Please see section 1b General Information for individual school's assigned COVID-19 Health Coordinator.

Additional Communication

All staff, students, and families have been informed to self-report possible COVID-19 symptoms to building administrators and COVID-19 coordinators.

We have a strong social media system including agency website, Twitter, Instagram, weekly school newsletters, Skylert, and email to provide daily updates on any new information staff, students, and families need to be aware of on the COVID-19 virus. Our Director of Technology will monitor information with our COVID-19 coordinator.



SEEDS OF
HEALTH, INC.

Teaching and learning

Student or Staff concerns

7

Student or Staff concerns

Seeds of Health will offer online learning to enrolled students who may meet the following criteria or otherwise uncomfortable to return to school in person or for hybrid learning. In addition, staff will be able to request alternative learning arrangements or work reassignments if they meet the following criteria such as teleworking.

Both students and staff are to meet with the Human Resource director to set up an accommodation plan.

Seeds of Health will ensure the following high risk areas of need are implemented for severe illness due to COVID-19 .

- Children who are medically compromised, who have neurological, genetic, metabolic conditions or who have congenital heart disease
- Having underlying medical conditions, including:
 - Chronic lung disease (COPD)
 - Serious heart conditions
 - Compromised immune system
 - Diabetes
 - Chronic kidney disease undergoing dialysis
 - Obesity (BMI of over 30 for adults or above the 95th percentile in children)
 - Sickle cell disease



**SEEDS OF
HEALTH, INC.**

Teaching and learning

Backfilling

7

The following backfilling plans will be implemented if an employee is in sick leave or absent



Seeds of Health Elementary

Hybrid, online and fulltime no social distancing

- Employees that are sick
 - Substitute Service- Frontline Education(Aesop/Kelly)
 - Fill in with a qualified teacher for the day
 - Guidance Counselor
 - Reading Teachers
 - Special teacher(Phy Ed,Music)
 - Dean of Students
 - Administrators
 - Paraprofessionals- all 3 are highly qualified and could manage the kids while the teacher or Virtual teacher helps remotely.
- Employees that are on an extended leave
 - Substitute Service- Frontline Education(Aesop/Kelly)
 - Have these qualified staff members cover an extended leave if we can't find a substitute.
 - Guidance Counselor
 - Reading Teacher
 - Special teacher(Phy Ed,Music)
 - Dean of Students
 - Administrators
 - Paraprofessionals- all 3 are highly qualified and could manage the kids while the teacher or Virtual teacher helps remotely.
- Cross Train Employees
 - Virtual Teacher Leader and Dean of Students will be a mentor for people doing multiple duties.
 - Beginning of year, they will sit in on curriculum meetings and collaborate with grade level teachers



SEEDS OF
HEALTH, INC.

Teaching and learning

Backfilling

7

Tenor High School – 1st Street Campus

- Employees that are sick
 - Substitute Service- Frontline Education(Aesop/Kelly)
 - Fill in with a qualified staff member for the day
 - Teachers on Prep Hour
 - School Counselor
 - Administrators
- Employees that are on an extended leave
 - Substitute Service- Frontline Education(Aesop/Kelly)
 - Have these qualified staff members cover an extended leave if we can't find a substitute.
 - Teachers on Prep Hour
 - School Counselor
 - Administrators





SEEDS OF
HEALTH, INC.



Teaching and learning

Backfilling

7

Tenor High School – Jackson Street Campus

- Employees that are sick
 - Substitute Service- Frontline Education(Aesop/Kelly)
 - Fill in with a qualified staff member for the day
 - Paraprofessionals- both are highly qualified and could manage the kids while the teacher or Virtual teacher helps remotely
 - School Resource Officer
 - Teachers on Prep Hour
 - School Counselor
 - Administrators
- Employees that are on an extended leave
 - Substitute Service- Frontline Education(Aesop/Kelly)
 - Have these qualified staff members cover an extended leave if we can't find a substitute.
 - Paraprofessionals- both are highly qualified and could manage the kids while the teacher or Virtual teacher helps remotely
 - School Resource Officer
 - Teachers on Prep Hour
 - School Counselor
 - Administrators



SEEDS OF
HEALTH, INC.

Teaching and learning

Backfilling

7

Grandview High School

- Employees that are sick
 - Substitute Service- Frontline Education(Aesop/Kelly)
 - Fill in with a qualified teacher for the day
 - Teachers on Prep Hour
 - Safety
 - Administrators
 - School Counselor
 - Online lab-blend in with another class if size permits.
- Employees that are on an extended leave
 - Substitute Service- Frontline Education(Aesop/Kelly)
 - Have these qualified staff members cover an extended leave if we can't find a substitute.
 - Teachers on Prep Hour
 - Administrators
 - School Counselor
 - Assess ability to move to online option either in the lab or remotely.

Veritas High School

- Employees that are sick
 - Substitute Service- Frontline Education(Aesop/Kelly)
 - Fill in with a qualified teacher for the day
 - Teachers on Prep Hour
 - Safety
 - Administrators
 - School Counselor
 - Online lab-blend in with another class if size permits.
- Employees that are on an extended leave
 - Substitute Service- Frontline Education(Aesop/Kelly)
 - Have these qualified staff members cover an extended leave if we can't find a substitute.
 - Teachers on Prep Hour
 - Administrators
 - School Counselor
 - Assess ability to move to online option either in the lab or remotely.





SEEDS OF
HEALTH, INC.

Teaching and learning

7

Seeds of Health Elementary K4-8 Reentry Model

Grades K4-8

Plan A structures a 2/2/1 academic schedule that places students in two cohorts (A and B) that alternate between in-person learning on the Seeds of Health Elementary Grade K4 through Grade 8 and physically-distanced (i.e., at home) virtual & other guided/independent (VOGI) learning.

Monday: Cohort A will be present in school for in-person instruction from middle school staff. While at school, students will follow all Seeds of Health (SOH) safety protocols and procedures. Cohort B will be working virtually/otherwise from home on assignments, projects, tasks, etc. as assigned by teachers.

Tuesday: Cohort A will be present in school for in-person instruction from middle school staff. While at school, students will follow all Seeds of Health (SOH) safety protocols and procedures. Cohort B will be working virtually/otherwise from home on assignments, projects, tasks, etc. as assigned by teachers.

Wednesday: Cohort B will be present in school for in-person instruction from middle school staff. While at school, students will follow all Seeds of Health (SOH) safety protocols and procedures. Cohort A will be working virtually/otherwise from home on assignments, projects, tasks, etc. as assigned by teachers.

Thursday: Cohort B will be present in school for in-person instruction from middle school staff. While at school, students will follow all Seeds of Health (SOH) safety protocols and procedures. Cohort A will be working virtually/otherwise from home on assignments, projects, tasks, etc. as assigned by teachers.

Friday: All students will be working virtually/otherwise from home on assignments, projects, tasks, etc. as assigned by teachers. During this time teachers will be available for conferencing with students & parents, prepping for in-person and virtual learning, grading and providing feedback on assignments and participating in school meetings and Professional Development.



SEEDS OF
HEALTH, INC.

Teaching and learning

7

Seeds of Health Elementary K4-8 Reentry Model

When students are at school

- Social distancing will be 6 feet throughout the entire school day, classroom are set up accordingly to ensure 6 feet distancing
- Students and staff will wear masks in all common areas
- PPE's will be provided to all staff
- 2 masks will be provided to all students
- Regular sanitizing, disinfecting and cleaning will occur throughout the day on all high contact areas
- 100% virtual learning for all students will be an option for students who request it if they are not comfortable returning to school or unable to return due to compromised health issues.

In school instruction

- Students attend class, inside classrooms 2 days a week using the cohort model
- Teaching will be face-to-face
- Rigorous grade level work
- Engagement expectations through attendance, participation and work completion



SEEDS OF
HEALTH, INC.

Teaching and learning

7

Seeds of Health Elementary K4-8 Reentry Model

Virtual instruction

- Asynchronous instruction
- Assignments will be an extension of in-person learning
- Google hangouts with teacher and/or students to stay connected

Lunch:

- Students will eat lunch with their cohort/group in their classroom

Health Room:

- Enclosed area
- Health Supervisors
 - 2 designated staff members will handle any student or staff illness during the school day
 - If someone becomes ill during the school day, they will be checked in our Health Room with the Health supervisor
 - Health supervisor will wear proper medical gear(gloves,mask/shield) and check temperature with an infrared thermometer.
 - Health supervisor will contact family, monitor patient/s while ill.



SEEDS OF
HEALTH, INC.

Teaching and learning

7

Seeds of Health Elementary K4-8 Reentry Model

Specials:

- Students will attend Physical education class where they will do activities that maintain 6 feet social distancing

Drop Off & Dismissal:

- **Drop Off (7:30-8:00)**
 - Parents will either walk or drive their child to school.
 - If walking, the parent will drop off the student outside the front entrance where our Safety Officer is stationed
 - Student will go directly to their designated class
 - Once arriving to school via any of the above mentioned modes of transportation, students will go through temperature checks and screening questions
 - Once through the temperature check and screening questions students will go to their assigned classrooms
- **Dismissal (3:05-3:35)**
 - Students will wait in their classroom/homeroom area until parent drives up with their “Family Number” visible
 - Staff will have students meet parents outside



SEEDS OF
HEALTH, INC.

Teaching and learning

Seeds of Health Elementary K4-8 Reentry Model

7

Grades K4-8 Hybrid Model

Grade	Room Number	Total Amount of Students Allowed Based on 6 Feet
K4	103	12
K4	104	12
K5	101	12
K5	102	12
1	205	13
1	206	12
2	202	10
2	203	14
3	224	11
3	227	11
4	221	11
4	222	12

Grade	Room Number	Total Amount of Students Allowed Based on 6 Feet
5	303	12
5	304	12
6	305	13
6	306	13
7	324	13
7	327	14
8	318	12



**SEEDS OF
HEALTH, INC.**

Teaching and learning

7

High School Reentry Models For

Tenor High 1st Street Campus, Tenor High Jackson Street Campus & Veritas High School

Two Day Rotation - Plan A

Plan A structures a 2/2/1 academic schedule that places students in two cohorts (A and B) that alternate between in-person learning on the Jackson St. and 1st St. Tenor High School and Veritas High School campuses and physically-distanced (i.e., at home) virtual & other guided/independent (VOGI) learning.

Monday: Cohort A will be present in school for in-person instruction from high school staff. While at school, students will follow all Seeds of Health (SOH) safety protocols and procedures. Cohort B will be working virtually/otherwise from home on assignments, projects, tasks, etc. as assigned by teachers.

Tuesday: Cohort A will be present in school for in-person instruction from high school staff. While at school, students will follow all Seeds of Health (SOH) safety protocols and procedures. Cohort B will be working virtually/otherwise from home on assignments, projects, tasks, etc. as assigned by teachers.

Wednesday: Cohort B will be present in school for in-person instruction from high school staff. While at school, students will follow all Seeds of Health (SOH) safety protocols and procedures. Cohort A will be working virtually/otherwise from home on assignments, projects, tasks, etc. as assigned by teachers.

Thursday: Cohort B will be present in school for in-person instruction from high school staff. While at school, students will follow all Seeds of Health (SOH) safety protocols and procedures. Cohort A will be working virtually/otherwise from home on assignments, projects, tasks, etc. as assigned by teachers.

Friday: All students will be working virtually/otherwise from home on assignments, projects, tasks, etc. as assigned by teachers. During this time teachers will be available for conferencing with students & parents, prepping for in-person and virtual learning, grading and providing feedback on assignments and participating in school meetings and Professional Development.



SEEDS OF
HEALTH, INC.

Teaching and learning

When high school students are at school

7

Tenor High School – Jackson Street Campus

Drop Off & Dismissal:

- **Drop Off (7:30-8:15)**
 - Students will get to school via multiple modes of transportation including the following:
 - A family member will drive and drop them off
 - Students will take the city bus
 - Students will walk
 - Students will take the school provided shuttle
 - Students will drive themselves
 - Once arriving to school via any of the above mentioned modes of transportation, students will enter the building and go through temperature check and screening questions
 - Once through the temperature check and screening questions students will go to their 1st hour classrooms and wait for class to start
- **Dismissal (3:16-3:30)**
 - Students who ride the shuttle and are assigned to route #1 will be dismissed via the PA system first
 - Once route #1 shuttle students are dismissed and out of the building, students who are being picked up, walking home, riding the city bus or driving themselves will be dismissed by classroom via the PA system
 - Once those students are out of the building, route #2 shuttle students will be dismissed to the gym to wait in the gym until the shuttle arrives for route #2



SEEDS OF HEALTH, INC.

Teaching and learning

When high school students are at school



Tenor High School – Jackson Street Campus

Tenor High School Jackson Street Campus Re-opening Hybrid Model Schedule

	Period 1: 8:15-9:03	Period 2: 9:33-10:21	Period 3: 10:26-11:14	Period 4A 11:19-12:07	Period 4B 11:49 -12:37	Period 5: 12:42-1:30	Period 6: 1:35-2:23	Period 7 2:28-3:16
FERNANDO MATH	Algebra 301 (4)	Prep	Pre-Algebra 301 (14)	LUNCH	Algebra 301 (10)	Math Exp. 301 (14)	Algebra 301 (12)	Algebra 301 (10)
TODD MATH	Prep	IED 103 (14)	Programming 103 (6)	CEA 103 (8)	LUNCH	POE 103 (7)	Programming 103 (13)	Programming 103 (10)
LESLIE ENGLISH	Novels 102 (13)	Prep	English 9 102 (14)	Novels 102 (13)	LUNCH	English 9 102 (12)	English 9 102 (15)	Novels 102 (11)
JACOB ENGLISH	English 11 101 (13)	English 10 101 (8)	English 11 101 (11)	PREP	LUNCH	English 11 101 (13)	English 10 101 (11)	English 10 101 (11)
JOSH SCIENCE	Genetics 104 (9)	Chemistry 104 (13)	Genetics 104 (10)	Chemistry 104 (12)	LUNCH	Chemistry 104 (12)	Genetics 104 (7)	PREP
ANNALYSE SCIENCE	Biology 105 (14)	Science Survey 105 (14)	Prep	LUNCH	Environmental 105 (13)	Environmental 105 (14)	Biology 105 (13)	Biology 105 (15)
ALEX SOCIAL STUDIES	Wisconsin Gov't. and Law 201 (12)	American Gov't. 201 (12)	Personal Finance 201 (12)	American Gov't 201 (5)	LUNCH	PREP	Personal Finance 201 (14)	Personal Finance 201 (12)
NICK SOCIAL STUDIES	Prep	U.S. History 107 (7)	U.S. History 107 (10)	LUNCH	World History 107 (15)	World History 107 (12)	U.S. History 107 (12)	World History 107 (15)
ZACH MATH	Geometry 302 (7)	Algebra 2 302 (10)	Algebra 2 302 (10)	Geometry 302 (13)	LUNCH	Geometry 302 (7)	Prep	Intro to Algebra II 302 (6)
LORI ENGLISH	Writers Workshop 107 (12)	Writers Workshop 102 (14)	Writers Workshop 105 (11)	LUNCH	Writers Workshop 203 (4)			
PARA	Study Hall GYM (19)	Study Hall GYM (17)	Study Hall GYM (9)	LUNCH	Study Hall 101 (15)	Study Hall GYM (17)	Study Hall GYM (12)	Study Hall GYM (18)
MATC MATH	Pre-Calc 203 (10)							



SEEDS OF
HEALTH, INC.

Teaching and learning

When high school students are at school

7

Tenor High School – 1st Street Campus

Drop Off & Dismissal:

- **Drop Off (7:30-8:15)**
 - Students will get to school via multiple modes of transportation including the following:
 - A family member will drive and drop them off
 - Students will take the city bus
 - Students will walk
 - Students will take the school provided shuttle
 - Students will drive themselves
 - Once arriving to school via any of the above mentioned modes of transportation, students will enter the building and go through temperature check and screening questions
 - Once through the temperature check and screening questions students will go to their 1st hour classrooms and wait for class to start
- **Dismissal (3:16-3:30)**
 - Students who ride the shuttle and are assigned to route #1 will be dismissed via the PA system first
 - Once route #1 shuttle students are dismissed and out of the building, students who are being picked up, walking home, riding the city bus or driving themselves will be dismissed by classroom via the PA system
 - Once those students are out of the building, route #2 shuttle students will be dismissed to wait until the shuttle arrives for route #2



SEEDS OF HEALTH, INC.

Teaching and learning

When high school students are at school



Tenor High School – 1st Street Campus

Tenor High School 1st Street Campus schedule meeting the 6ft distancing CDC requirement

	Period 1: 8:15-9:03	Period 2: 9:33-10:21	Period 3: 10:26-11:14	Period 4A TBD 11:19-12:07	Period 4B TBD 11:49 -12:37	Period 5: 12:42-1:30	Period 6: 1:35-2:23	Period 7 2:28-3:16
JESSE MATH	Prep	Pre-Algebra 1W (13)	Study Hall 1W (13)	Study Hall 1W (7)	LUNCH	Algebra 1W (10)	Algebra 1W (6)	Math Explorations 1W (13)
PAM MATH	Geometry 1N (11)	Prep	Geometry 1N (5)	Study Hall 1N (7)	LUNCH	Algebra II 1N (5)	Intro to Algebra II 1N (4)	Computer Programming 1N (10)
MELISSA ENGLISH	English 9 2NE (13)	English 9 2NE (6)	Prep	Writers Workshop 2NE (12)	LUNCH	Writers Workshop 2NE (9)	Writers Workshop 2NE (13)	English 9 2NE (15)
RACHEL ENGLISH	English 10 2N (5)	English 11 2N (9)	English Novels 2N (9)	English 10 2N (5)	LUNCH	Study Hall 2N (9)	Study Hall 2N (12)	Prep
LUKE SOCIAL STUDIES	World History 2S (15)	American Government 2S (11)	World History 2S (13)	American Government 2S (9)	LUNCH	World History 2S (15)	American Government & Law 2S (9)	Prep
SHARI SCIENCE	Chemistry 1S (9)	Biology 1S (15)	Science Survey 1S (13)	Biology 1S (13)	LUNCH	Prep	Science Survey 1S (13)	Biology 1S (15)
ZAC SPED		Study Skills 11/12 2NW		Study Skills 10 2NW	LUNCH	Study Skills 9 2NW		

() = number of students in classrooms using two day rotation model-all desks are 6ft apart



SEEDS OF
HEALTH, INC.

Teaching and learning

When high school students are at school

7

Veritas High School

Drop Off & Dismissal:

- **Drop Off (7:45-8:10)**
 - Students will get to school via multiple modes of transportation including the following:
 - A family member will drive and drop them off
 - Students will take the city bus
 - Students will walk
 - Students will drive themselves
 - If dropped off by a family member, students will be let out near front doors on 30th Street or Oklahoma Avenue.
 - Once arriving to school via any of the above mentioned modes of transportation, students will enter the building and go through temperature check and screening questions
 - Once through the temperature check and screening questions students will go to their homerooms
- **Dismissal (3:25-3:45)**
 - If students are being picked up by a family member, students will wait in their classroom/homeroom area until the parent arrives with a vehicle.
 - If students walk, drive, or take a bus, students will leave the building immediately unless arrangements have been made to work with a staff member under supervision.
 - If students stay beyond dismissal time, they must be accompanied by a staff member who walks them out the doors when ready to leave.



SEEDS OF HEALTH, INC.

Teaching and learning

When high school students are at school



Veritas High School

Veritas High School Classroom schedule meeting the 6ft distancing CDC requirement

	Period 1: 8:30-9:20	Period 2: 9:25-10:15	Period 3: 10:20-11:10	Lunch and DST 11:15 -12:35	Period 4: 12:40-1:30	Period 5: 1:35-2:25	Period 6: 2:30-3:20
DAN MATH	Transitions 2 101 (7)	AP Calculus 101 (12)	Prep	LUNCH A 101 (10)	Algebra 2 101 (14)	Transitions 1 101 (14)	Algebra 2 101 (14)
CARLY MATH	Adv Comp Sci 102 (11)	Statistics 102 (12)	Intro Comp Sci 102 (10)	LUNCH B 102 (10)	Prep	Algebra 1 102 (13)	Algebra 1 102 (13)
ROB MATH	Pre-Calculus B01 (10)	Geometry B01 (13)	Geometry B01 (13)	LUNCH C B01 (9)	Personal Finance B01 (12)	Prep	Pre-Calculus B01 (10)
JOAN ENGLISH	Creative Writing B04 (13)	Honors Brit Lit B04 (14)	AP English B04 (11)	LUNCH C B04 (13)	American Lit B04 (12)	Prep	American Lit B04 (12)
KELLY ENGLISH	Literary Analysis B05 (12)	Prep	British Literature B05 (13)	LUNCH C B05 (9)	English Essentials B05 (10)	British Literature B05 (13)	Literary Analysis B05 (12)
JOE ENGLISH	Prep	World Literature B06 (13)	World Literature B06 (13)	LUNCH A B06 (10)	Drama B06 (12)	Drama B06 (12)	Journalism B06 (12)
ALISSA SCIENCE	Genetics B03 (10)	Genetics B03 (10)	Biology B03 (13)	LUNCH C B03 (13)	AP Biology B03 (13)	Biology B03 (13)	Prep
REBEKAH SCIENCE	Prep	Chemistry B02 (13)	Chemistry B02 (13)	LUNCH B B02 (10)	Anatomy & Phys B02 (14)	Adv Anat & Phys B02 (15)	Earth & Space Sci B02 (10)
JENNIFER SOCIAL STUDIES	Government 104 (10)	Citizenship 104 (10)	Government 104 (10)	LUNCH A 104 (10)	Prep	AP Government 104 (12)	Citizenship 104 (10)
CHRIS SOCIAL STUDIES	Geography 200 (13)	Geography 200 (10)	Making of Mke 200 (12)	LUNCH A 200 (10)	US History 200 (13)	US History 200 (13)	Prep
SCOTT SOCIAL STUDIES	Adolescent Psych 103 (13)	Global Civilizations 103 (13)	Prep	LUNCH C 103 (9)	Global Civilizations 103 (13)	Cont World Issues 103 (12)	Cont World Issues 103 (12)
JENNY SPANISH	AP Spanish 105 (10)	Prep	Heritage Speakers 105 (9)	LUNCH B 105 (10)	Heritage Speakers 105 (9)	Spanish 1 105 (8)	Heritage Speakers 105 (9)
VICKI ART	Art Foundations B07 (12)	Art 2 B07 (10)	Art History B07 (10)	LUNCH B B07 (10)	Art Foundations B07 (12)	Art 2 B07 (12)	Prep
SPED	Study Skills 201 (4)	Study Skills 201 (4)				Study Skills 201 (4)	



SEEDS OF
HEALTH, INC.

Teaching and learning

7

High School Reentry Model For Grandview High School

Grandview High School

See [this document](#) to view Grandview's reentry plan



**SEEDS OF
HEALTH, INC.**

Teaching and learning

Online learning

7

Seeds of Health will offer online learning to enrolled students who may be medically vulnerable or otherwise unwilling to return to school in person or for hybrid learning. A plan has been created for students to self-identify as high risk for severe illness from COVID-19.

Medical conditions approved by a doctor include:

- Chronic lung disease
- Serious heart conditions
- Compromised immune system
- Diabetes Type 2
- Chronic kidney disease or undergoing dialysis
- Obesity body mass index 95% in children
- Sickle cell disease
- Cancer

Online learning programs

For all students who opt to stay home, the options on the following pages will be provided.



**SEEDS OF
HEALTH, INC.**

Teaching and learning

Online learning

7

K4-4th Grade

All classes will be live streamed for virtual students through Google Meet. Virtual students will join their classes at the regularly scheduled times (synchronous learning) and follow the schedule consistent with in-person students. Seesaw will be the primary tool for access to daily learning activities and resources. All students in grades K-4 will be provided a Chromebook to access materials and a hotspot if needed. The district will provide home technology support to ensure connectivity and access to all learners. Virtual students may be assigned alternative activities based on the specific material needs to complete in-person tasks. For virtual learning, the expectations, rigor of assignments, and grading will be the same as for students attending in person. Families with students attending virtually will need to come to school to pick-up, drop-off, and exchange materials on a weekly basis to ensure learning materials are available to all students.

5th Grade -12 Grade

Students will be part of the cohort and follow their schedule for two days of "in person" learning and three days of virtual learning. When their cohort is on the two days of "in person" learning, all classes will be live streamed for virtual students through Google Meet. Virtual students will join their classes at the regularly scheduled times (synchronous learning) and follow the schedule consistent with in-person students. Google Classroom will be the primary tool for access to daily learning activities and resources. Virtual students may be assigned alternative activities based on the specific materials needed to complete in-person tasks. The three remaining days, the virtual students will complete the same virtual activities as the rest of their cohort. For virtual learning, the expectations, rigor of assignments, and grading will be the same as for students attending in person. Families with students attending virtually will need to come to school to pick-up, drop-off, and exchange materials on a weekly basis to ensure learning materials are available to all students. All students in grades 5-12 will be provided a Chromebook to access materials and a hotspot if needed. The district will provide home technology support to ensure connectivity and access to all learners.



SEEDS OF
HEALTH, INC.

Teaching and learning

Full remote online learning

7

Full Remote Online Learning (Plan B)

Seeds of Health will review the full remote online learning (Plan B) every thirty days to evaluate the data to determine how we would Phase in the hybrid model

Should schools be closed to in-person and hybrid instruction, Seeds of Health will need to be prepared to offer virtual learning options in the 2020-2021 school year.

Under a school closure order, all students would continue remote learning. Online learning would be a mix of asynchronous learning and synchronous learning. We know students learn best with face-to-face instruction, so Seeds of Health would seek to use synchronous learning opportunities for students to connect with classmates and teachers on a regular basis while engaging in our on-line learning curriculum. Clear and consistent expectations and standards are in place to ensure all students are receiving adequate instruction. Seeds of Health would coordinate with DPI to ensure instructional requirements are being met, or to seek waivers for any requirements that cannot be met by on-line instruction. On-line learning would continue until it was deemed appropriate for the safe return of students to school buildings for face-to-face instruction by state or local health officials.



**SEEDS OF
HEALTH, INC.**

Communication

8

Seeds of Health understands the concern we all have regarding the COVID-19 virus and the importance of communicating regularly with students, families, staff and the larger school community.

Students, staff, and parents will be provided with the following options to keep them informed and updated on all information regarding the COVID-19 virus. Please understand that the timing of these items may vary depending on when certain events occur.

1. Contact the Milwaukee Public Health Department @ (414) 286-3521
Press 6 for updates on COVID 19 Virus transmission and response to the community.
2. Contact or email your building principal

Seeds of Health Elementary Theresa Yurk, Principal 414-385-5613 tyurk@seedsofhealth.org	Seeds of Health Elementary Jim Kotsonis, Principal 414-385-5662 jkotsonis@seedsofhealth.org
---	---

Tenor High School Jackson Street Campus Tyson Tlachac, Principal 414-390-0835 ttlachac@seedsofhealth.org	Tenor High School 1st Street Campus Brenda Jeske Schmidt, Principal 414-308-1236 bjeske@seedsofhealth.org
--	---

Grandview High School Debi Harry, Principal 414-672-3998 dharry@seedsofhealth.org	Veritas High School George Thimmesch, Principal 414-389-5570 gthimmesch@seedsofhealth.org
---	---

3. Seeds of Health will maintain weekly or as necessary updates with the Milwaukee Public Health Department regarding COVID-19 recommendations.

Seeds of Health will keep you updated through the following :

- Emails to families
- Skylert messages to families
- Weekly news release updates
- Seeds of Health Website www.seedsofhealth.org
- Social media including:
 - Facebook
 - Instagram
 - Twitter



SEEDS OF
HEALTH, INC.

Future Guidance

9

This plan provides resources regarding COVID-19.

Resources

[Seeds of Health 2020-21 Cleaning Schedules](#)

[Seeds of Health B L Cleaning EPA N List Approved Chemicals.](#)

[Seeds of Health Student Handbook COVID-19 Appendix A](#)

[Seeds of Health Employee Handbook COVID-19 Appendix A](#)

[American Academy of Pediatrics - COVID-19 Planning Considerations:
Guidance for School Re-entry](#)



**SEEDS OF
HEALTH, INC.**

School Floor plans

10



**SEEDS OF
HEALTH**
ELEMENTARY
SCHOOL

**Seeds of Health
Elementary**
1445 S. 32nd Street
Milwaukee, WI 53215



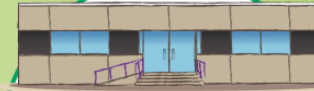
TENOR
HIGH SCHOOL
1ST STREET CAMPUS

**Tenor High School
1st Street Campus**
131 S. 1st Street
Milwaukee, WI 53204



TENOR
HIGH SCHOOL
JACKSON STREET CAMPUS

**Tenor High School
Jackson Street Campus**
840 N. Jackson Street
Milwaukee, WI 53202



GRANDVIEW
HIGH SCHOOL

Grandview High School
2745 S 13th Street
Milwaukee, WI 53215



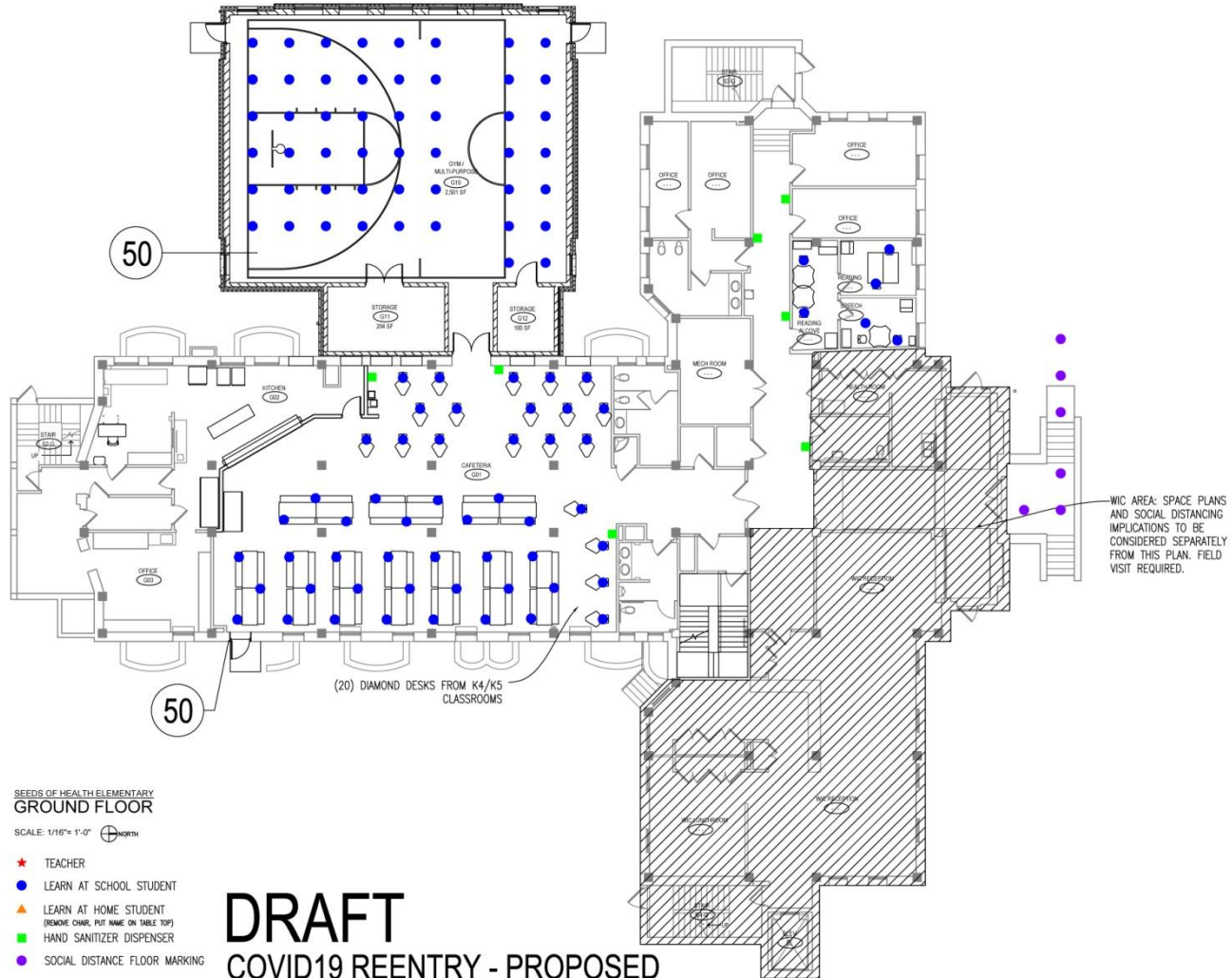
VERITAS
HIGH SCHOOL

Veritas High School
3025 W Oklahoma Ave
Milwaukee, WI 53215



SEEDS OF HEALTH
ELEMENTARY
SCHOOL

Seeds of Health Elementary Ground Floor

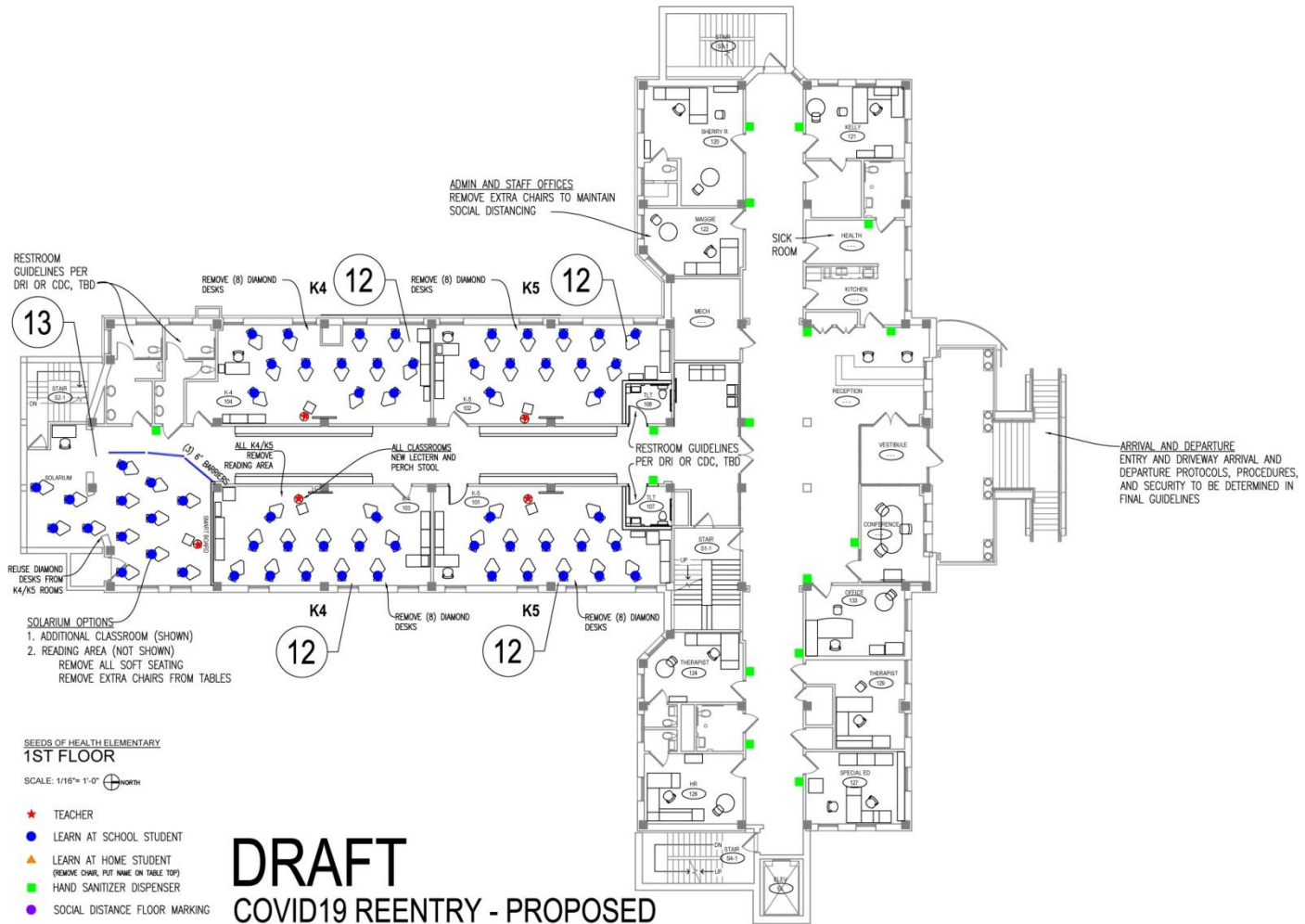




SEEDS OF HEALTH
ELEMENTARY
SCHOOL

Seeds of Health Elementary

1st Floor

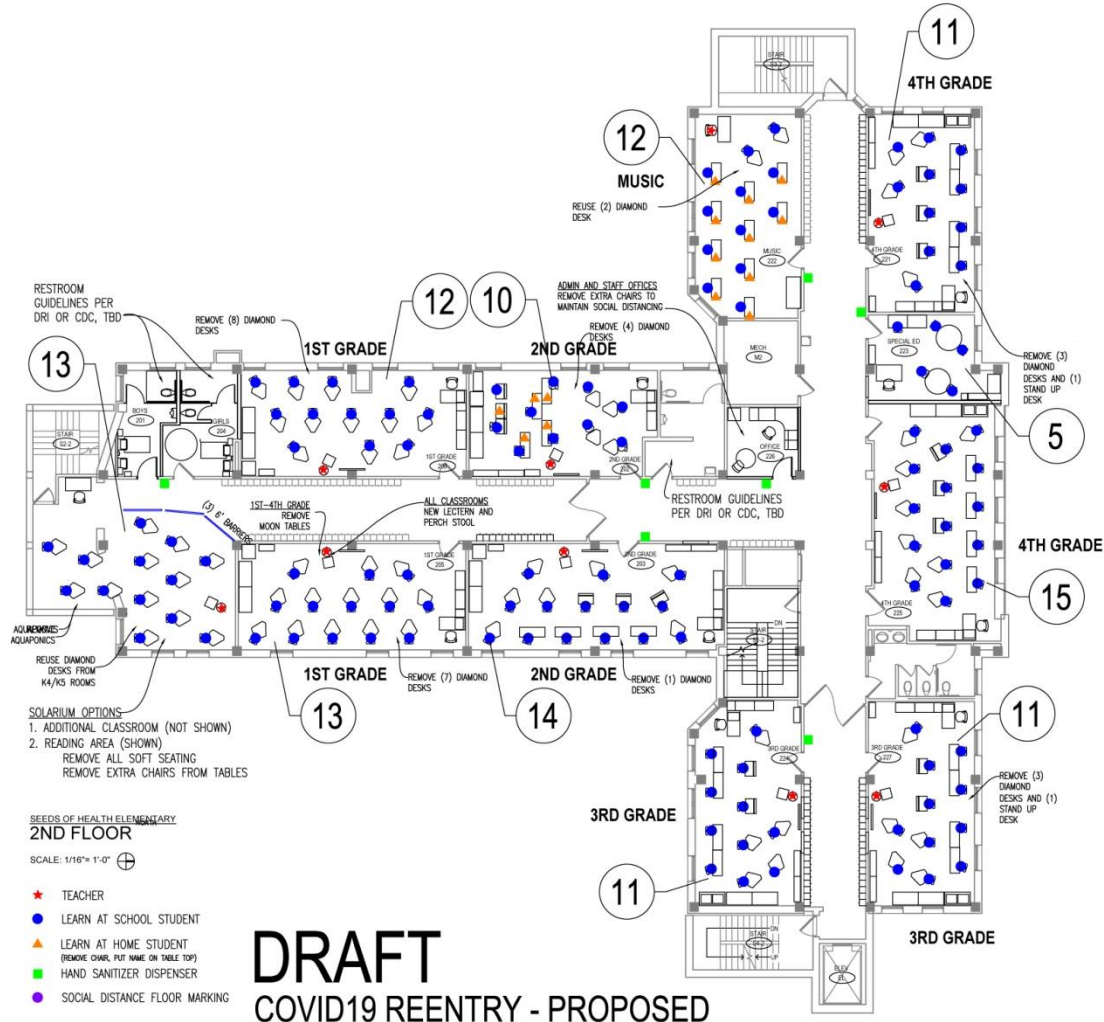




SEEDS OF HEALTH
ELEMENTARY
SCHOOL

Seeds of Health Elementary

2nd Floor

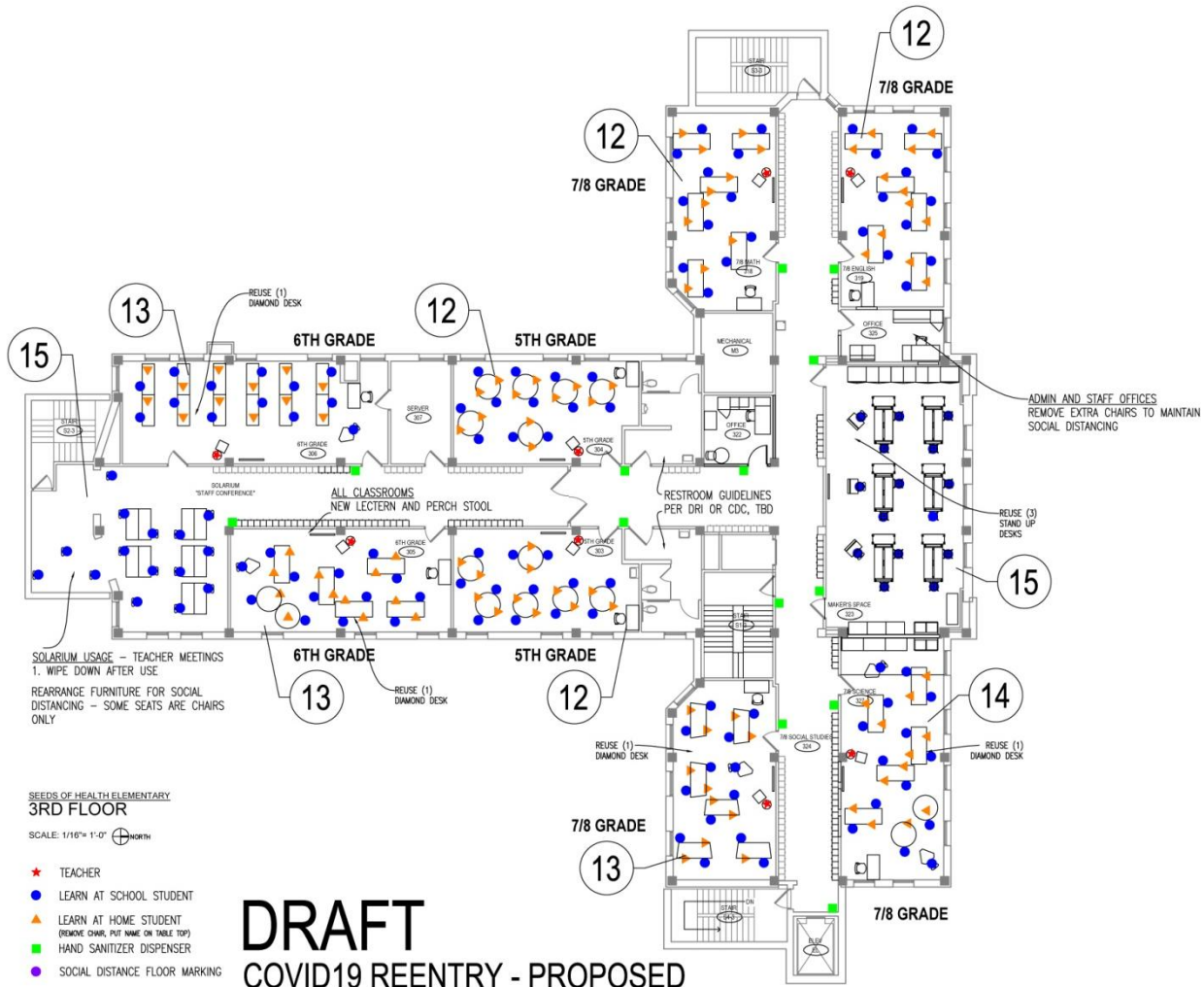




SEEDS OF HEALTH
ELEMENTARY
SCHOOL

Seeds of Health Elementary

3rd Floor

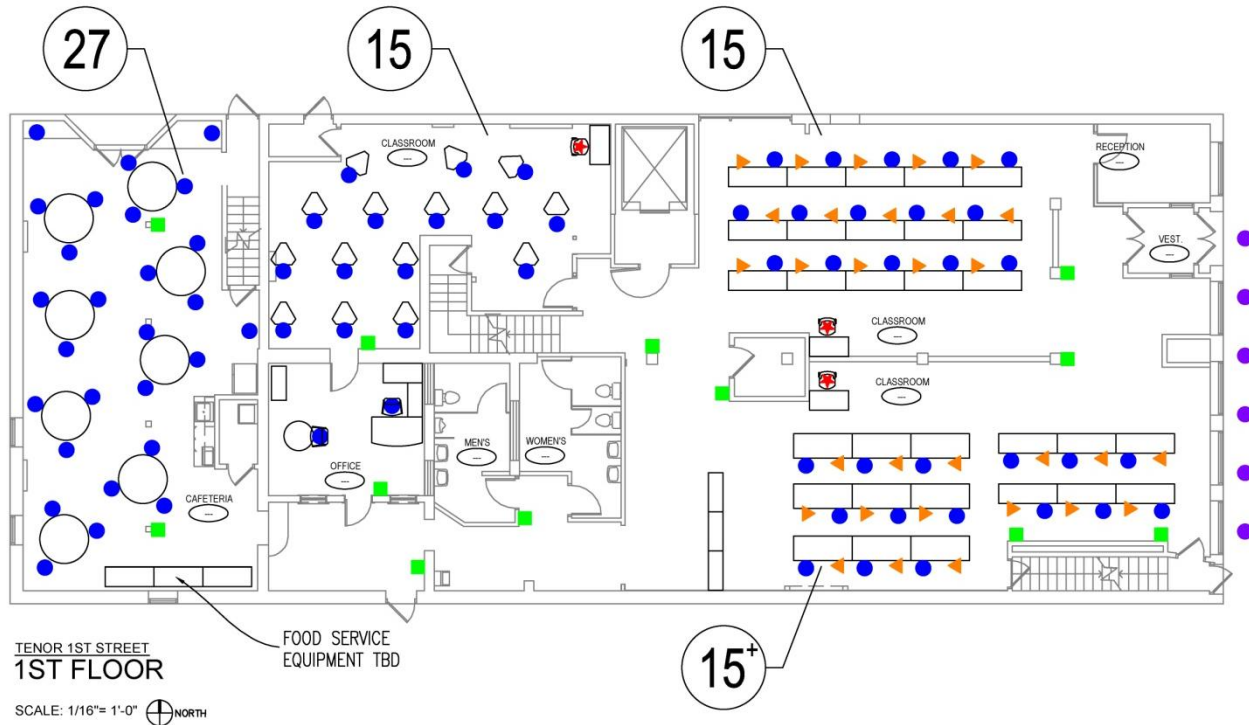




TENOR
HIGH SCHOOL
1ST STREET CAMPUS

Tenor High School – 1st Street Campus

1st Floor



- ★ TEACHER
- LEARN AT SCHOOL STUDENT
- ▲ LEARN AT HOME STUDENT
(REMOVE CHAIR, PUT NAME ON TABLE TOP)
- HAND SANITIZER DISPENSER
- SOCIAL DISTANCE FLOOR MARKING

DRAFT

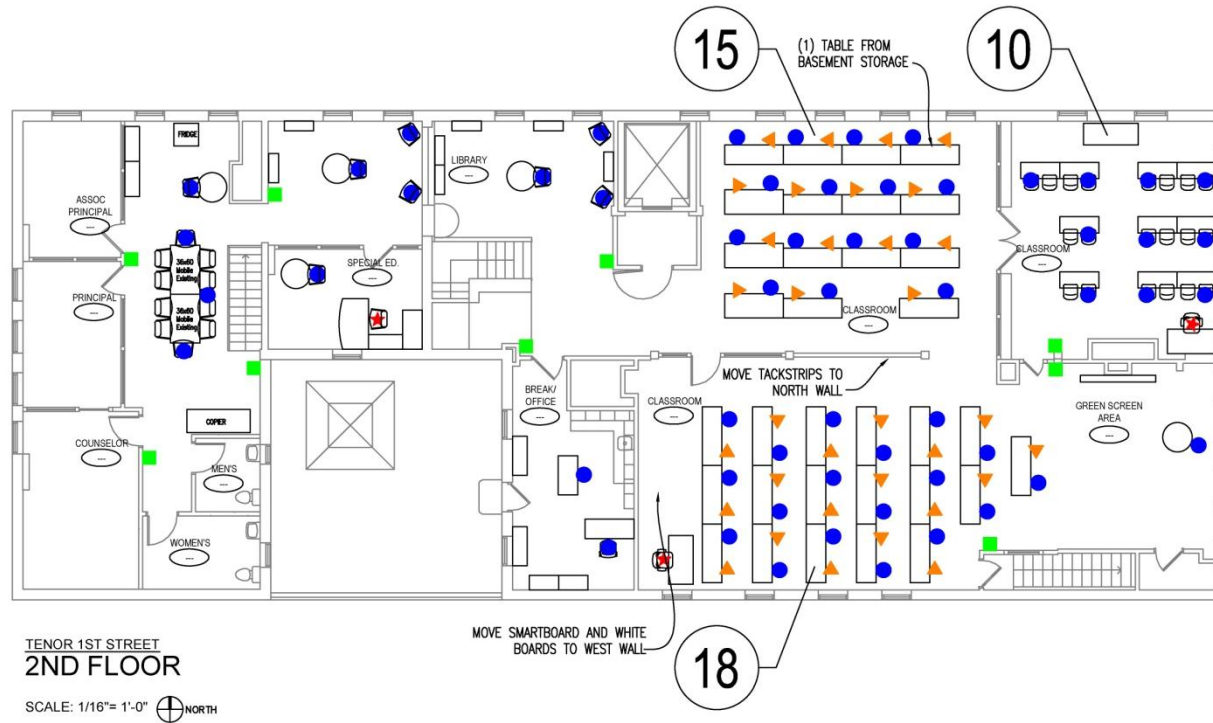
COVID19 REENTRY - PROPOSED



TENOR
HIGH SCHOOL
1ST STREET CAMPUS

Tenor High School – 1st Street Campus

2nd Floor



TENOR 1ST STREET
2ND FLOOR

SCALE: 1/16" = 1'-0" NORTH

- ★ TEACHER
- LEARN AT SCHOOL STUDENT
- ▲ LEARN AT HOME STUDENT
(REMOVE CHAIR, PUT NAME ON TABLE TOP)
- HAND SANITIZER DISPENSER
- SOCIAL DISTANCE FLOOR MARKING

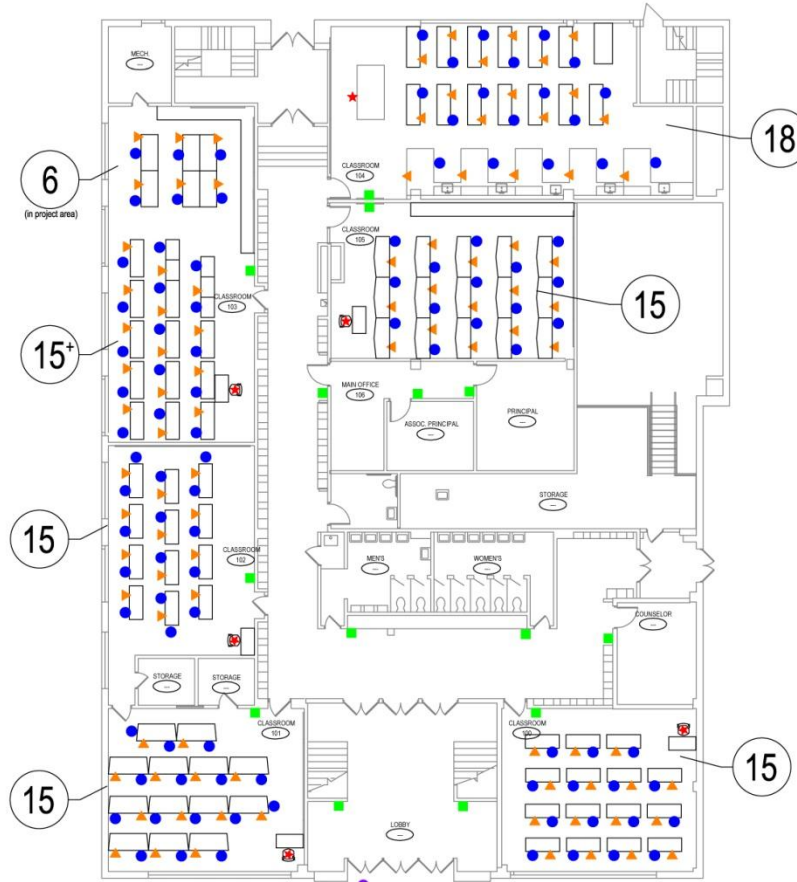
DRAFT
COVID19 REENTRY - PROPOSED



TENOR
HIGH SCHOOL
JACKSON STREET CAMPUS

Tenor High School – Jackson Street Campus

1st Floor



TENOR HIGH SCHOOL
1ST FLOOR

SCALE: 1/16" = 1'-0" NORTH

- ★ TEACHER
- LEARN AT SCHOOL STUDENT
- ▲ LEARN AT HOME STUDENT
(REMOVE CHAR, PUT NAME ON TABLE TOP)
- HAND SANITIZER DISPENSER
- SOCIAL DISTANCE FLOOR MARKING

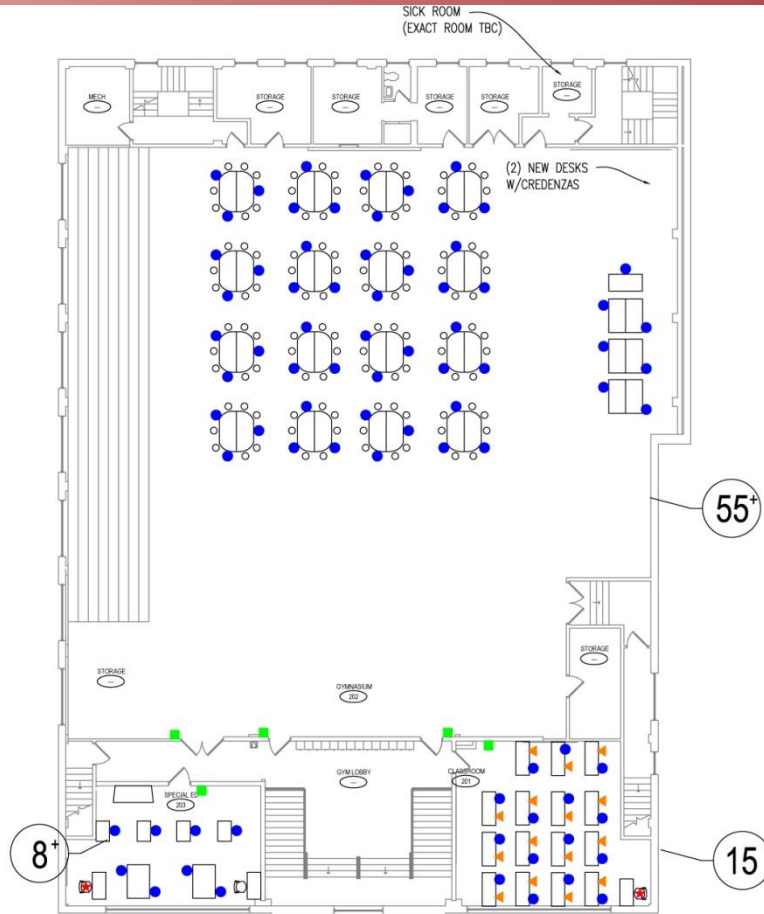
DRAFT
COVID19 REENTRY - PROPOSED



TENOR
HIGH SCHOOL
JACKSON STREET CAMPUS

Tenor High School – Jackson Street Campus

2nd Floor



TENOR HIGH SCHOOL
2ND FLOOR

SCALE: 1/16" = 1'-0"

- ★ TEACHER
- LEARN AT SCHOOL STUDENT
- ▲ LEARN AT HOME STUDENT (REMOVE CHAIR, PUT NAME ON TABLE TOP)
- HAND SANITIZER DISPENSER
- SOCIAL DISTANCE FLOOR MARKING

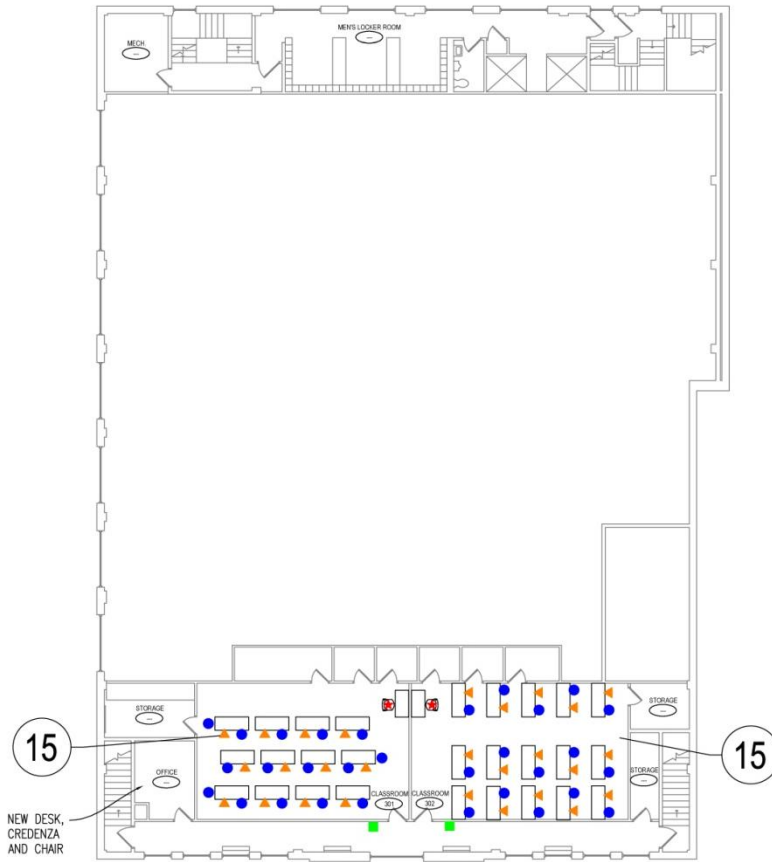
DRAFT
COVID19 REENTRY - PROPOSED



TENOR
HIGH SCHOOL
JACKSON STREET CAMPUS

Tenor High School – Jackson Street Campus

3rd Floor



TENOR HIGH SCHOOL
3RD FLOOR

SCALE: 1/16"= 1'-0"

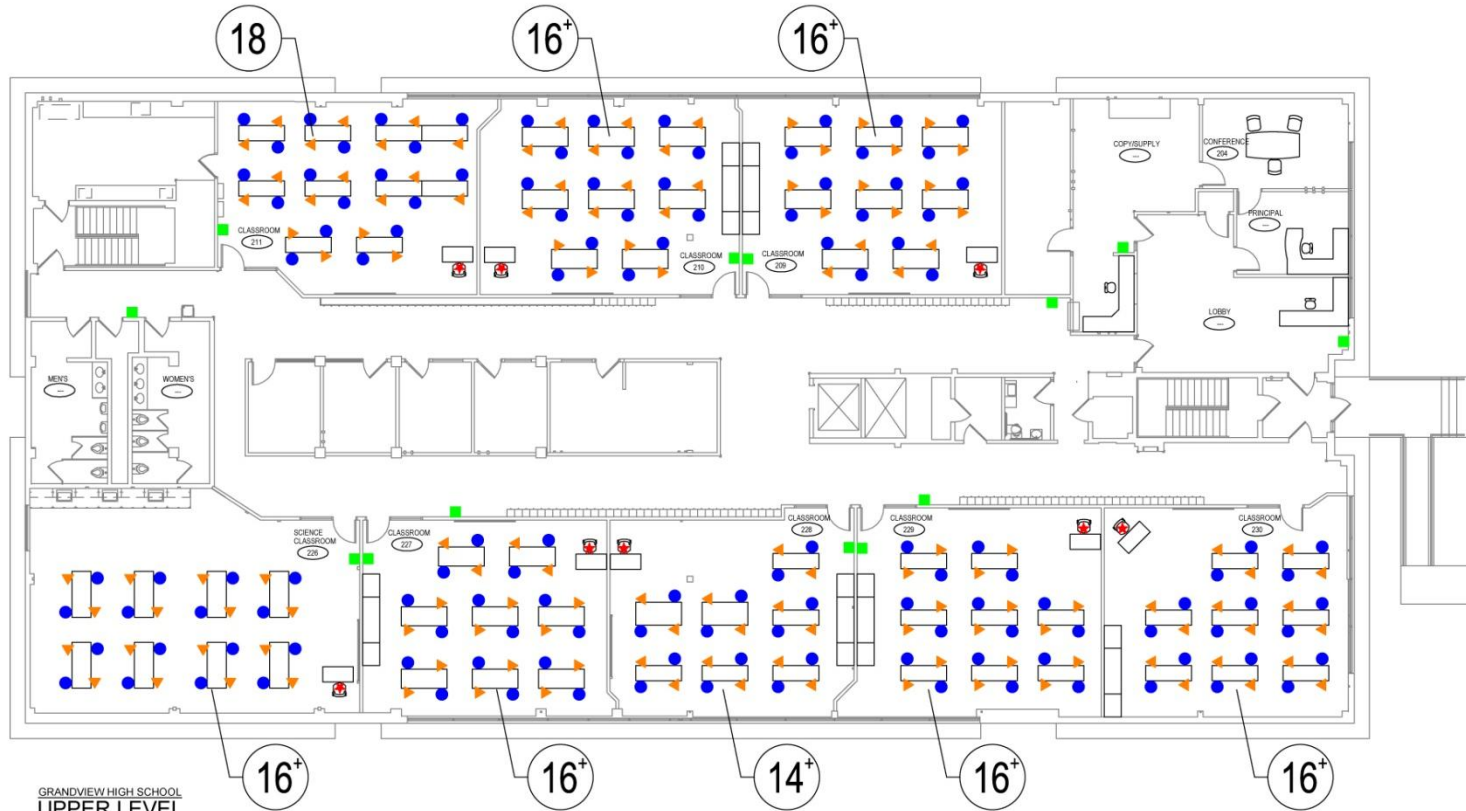
- ★ TEACHER
- LEARN AT SCHOOL STUDENT
- ▲ LEARN AT HOME STUDENT
(REMOVE CHAIR, PUT NAME ON TABLE TOP)
- HAND SANITIZER DISPENSER
- SOCIAL DISTANCE FLOOR MARKING

DRAFT
COVID19 REENTRY - PROPOSED



GRANDVIEW
HIGH SCHOOL

Grandview High School Upper Level



GRANDVIEW HIGH SCHOOL
UPPER LEVEL

SCALE: 1/16" = 1'-0" NORTH

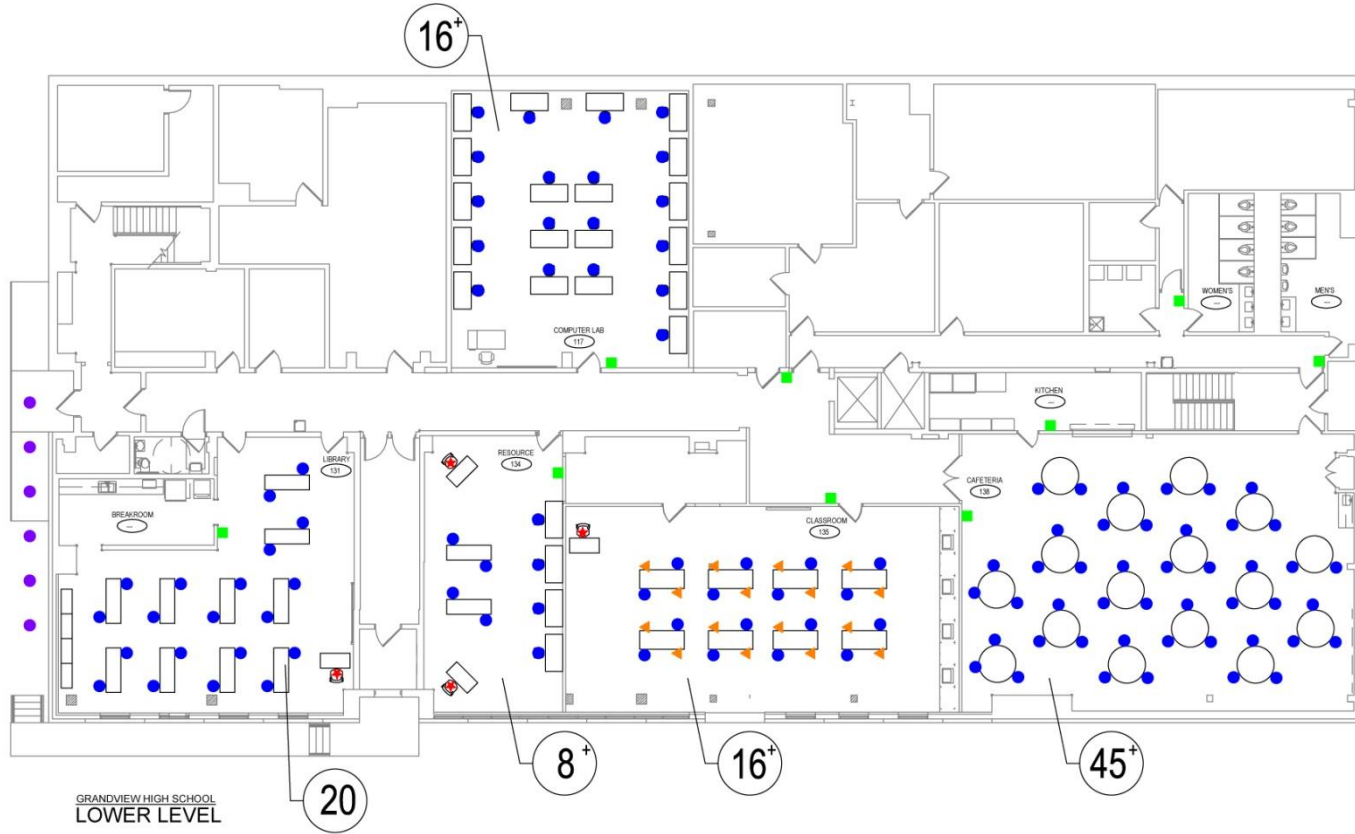
- ★ TEACHER
- LEARN AT SCHOOL STUDENT
- ▲ LEARN AT HOME STUDENT
(REMOVE CHAIR, PUT NAME ON TABLE TOP)
- HAND SANITIZER DISPENSER
- SOCIAL DISTANCE FLOOR MARKING

DRAFT
COVID19 REENTRY - PROPOSED



GRANDVIEW
HIGH SCHOOL

Grandview High School Lower Level



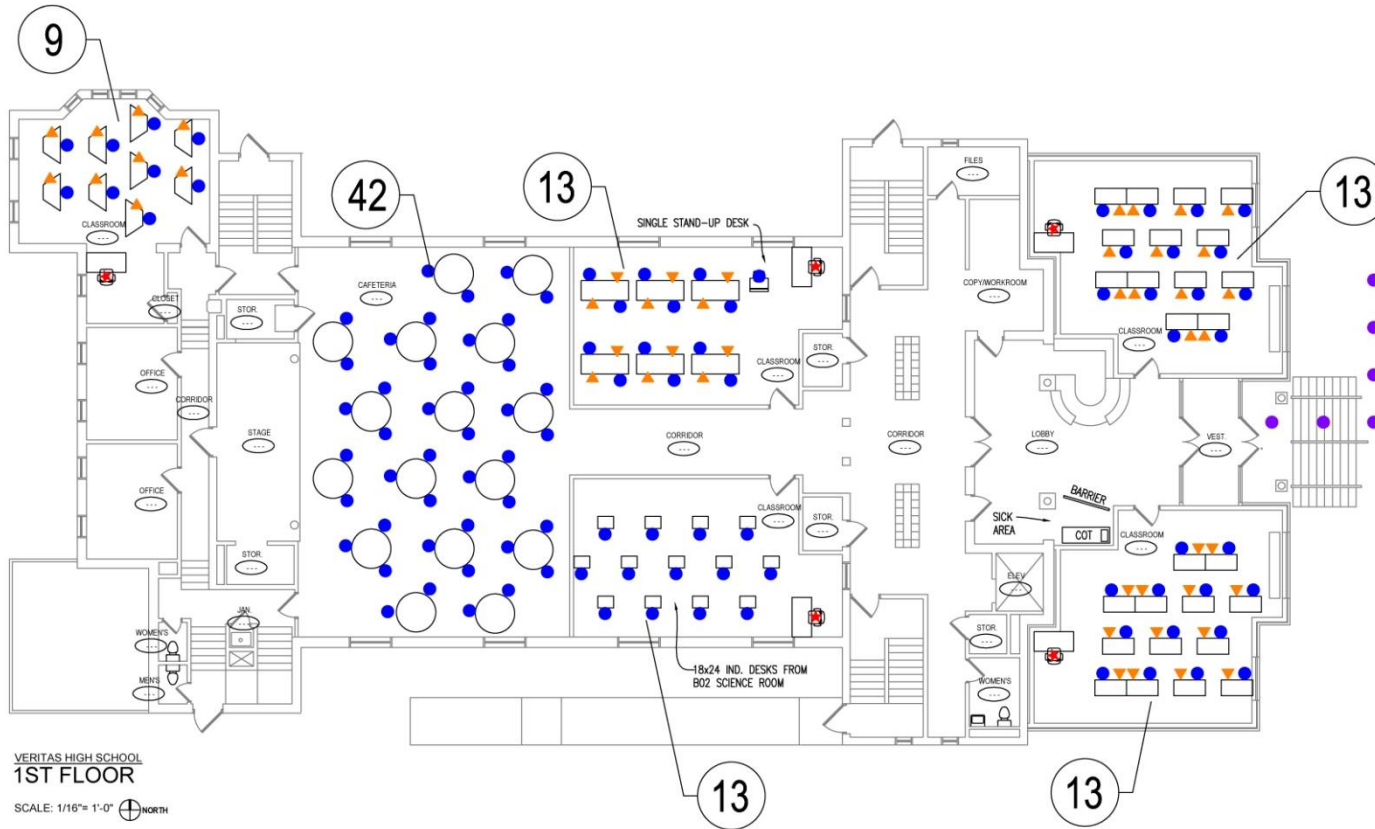
GRANDVIEW HIGH SCHOOL
LOWER LEVEL
SCALE: 1/16" = 1'-0" NORTH

- ★ TEACHER
- LEARN AT SCHOOL STUDENT
- ▲ LEARN AT HOME STUDENT
(REMOVE CHAIR, PUT NAME ON TABLE TOP)
- HAND SANITIZER DISPENSER
- SOCIAL DISTANCE FLOOR MARKING

DRAFT
COVID19 REENTRY - PROPOSED



Veritas High School 1st Floor



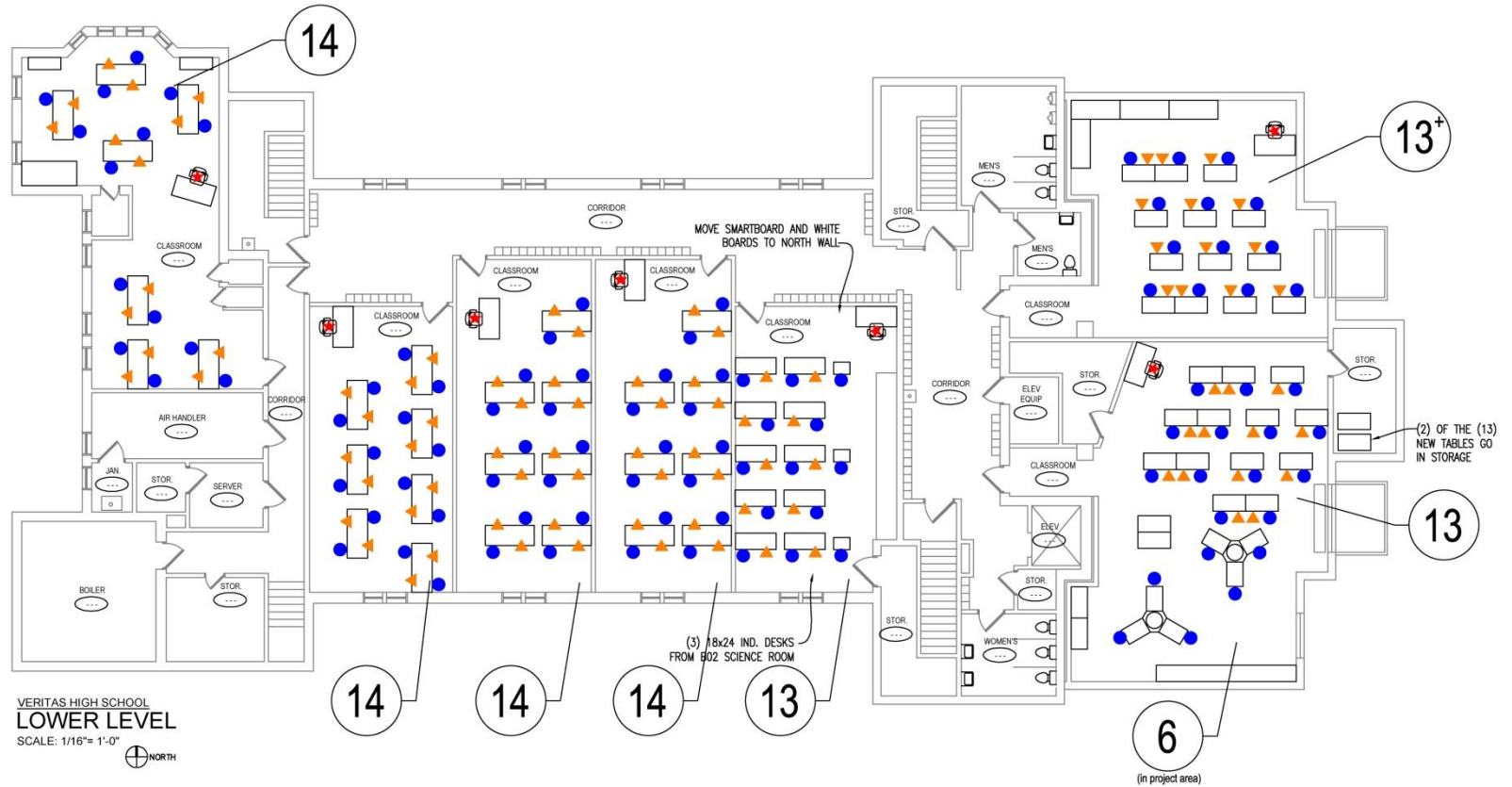
VERITAS HIGH SCHOOL
1ST FLOOR
SCALE: 1/16" = 1'-0" NORTH

- ★ TEACHER
- LEARN AT SCHOOL STUDENT
- ▲ LEARN AT HOME STUDENT
(REMOVE CHAIR, PUT NAME ON TABLE TOP)
- HAND SANITIZER DISPENSER
- SOCIAL DISTANCE FLOOR MARKING

DRAFT
COVID19 REENTRY - PROPOSED



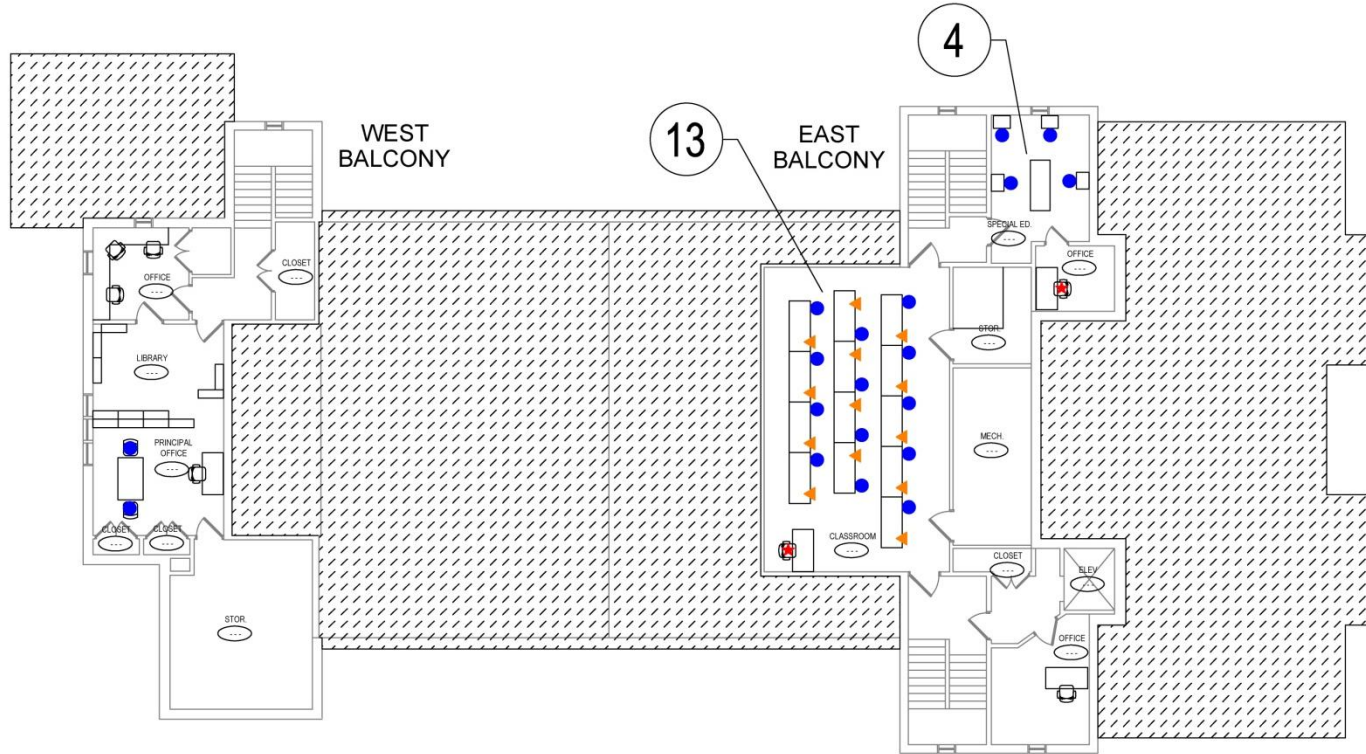
Veritas High School Lower Level



DRAFT
COVID19 REENTRY - PROPOSED



Veritas High School Balcony Level



VERITAS HIGH SCHOOL
BALCONY LEVEL

SCALE: 1/16" = 1'-0" NORTH

- ★ TEACHER
- LEARN AT SCHOOL STUDENT
- ▲ LEARN AT HOME STUDENT
(REMOVE CHAIR, PUT NAME ON TABLE TOP)
- HAND SANITIZER DISPENSER
- SOCIAL DISTANCE FLOOR MARKING

DRAFT
COVID19 REENTRY - PROPOSED



**SEEDS OF
HEALTH, INC.**



Seeds of Health, Inc. Schools Re-entry Plan - Fall 2020

August 2020



**grow
with
Seeds**